

# THE CATALOG



Look where you are walking, love what you are walking on; beneath your feet we have created a whole world of experiences.

Welcome to *NOW CARPETS*.

Mira por donde pisas, ama por donde pasas, porque debajo de ti hemos creado todo un mundo para vivirlo.

Bienvenido a *NOW CARPETS*.

*Regardez où vous mettez les pieds, aimez où vous allez, car sous vous nous avons créé tout un monde pour le vivre.*

*Bienvenue à NOW CARPETS.*



1. OUR PHYLOSOPY .....	P.6
2. MANUFACTURING SYSTEM .....	P.8
3. MATERIALS .....	P.12
4. DESIGNERS .....	P.14
5. COLLECTIONS .....	P.18
6. CUSTOM CARPETS .....	P.180

7. PROJECTS .....	P.182
8. TECHNICAL .....	P.250
9. CERTIFICATES .....	P.264
10. CLEANING .....	P.266

# OUR PHYLOSOPY

## Nuestra filosofía



Miguel Paracuellos

My colleagues have asked me to briefly highlight what has been happening since our previous catalogue was published, so here goes...

Two new designers, Arik Levy and Inma Bermúdez, have joined our team. Both of them offer their modern, cosmopolitan vision of our product. We are now present in all five continents, with offices in New York and Abu Dhabi and we have been commissioned major projects that provide us with greater experience and a more global concept.

Our passion for a job well done has been evident at the international shows and events we have participated in and magazines such as Interior Design, Surface or Wallpaper have showcased some of our key projects.

We have stepped up our “à la carte carpet” service because we believe that each project is unique and each design can be adapted to even the smallest detail.

We have put into operation a “door-to-door” logistics service so that our customers can concentrate on their work without having to think about anything else.

The quality of our products and their compliance with the technical requirements of projects is certified by international companies.

Our moral commitment: RUGMARK certifies that child labour is not used to produce our rugs and carpets.

And last but not least, we are just as enthusiastic as ever about our company project that, without your help and that of the NOWCarpets team, would never have been possible.

We will never lose our passion for a job well done and, of course, our passion for carpets.

Many thanks.

Mis compañeros me piden que destaque brevemente lo acontecido desde nuestro anterior catálogo. Lo intento con la misma ilusión con que siempre lo hemos hecho.

Se han incorporado nuevos diseñadores, Arik Levy e Inma Bermúdez; y todos ellos aportan una visión cosmopolita y actual de nuestro producto. Estamos presentes en los cinco continentes con oficinas en New York y Abu Dhabi. Realizamos grandes proyectos que nos aportaron más experiencia y una concepción más global.

Ferias y eventos internacionales han sido testigo de nuestra pasión por un trabajo bien hecho. Y revistas como Interior Design, Surface o Wallpaper, se han hecho eco de nuestros proyectos.

Hemos reforzado nuestro servicio de “alfombras a la carta”, porque entendemos que cada proyecto es único y cada diseño debe poder adaptarse hasta el más mínimo detalle.

Hemos introducido Nuestro servicio logístico “puerta a puerta”, para que nuestros clientes se centren solo en su trabajo .

Compañías internacionales Certifican la calidad de nuestros productos y los requisitos técnicos necesarios en los proyectos. Compromiso ético: RUGMARK, que certifica la no utilización de mano de obra infantil en la elaboración de nuestras alfombras.

Continuamos ilusionados en nuestro proyecto, que sin su apoyo y el del equipo de NOWCarpets, no hubiera sido posible.

Que no perdamos nunca nuestra pasión por el trabajo bien hecho y, claro está, nuestra pasión por las alfombras.

Muchas gracias.

Mes collègues me demandent de raconter brièvement tout ce qui s'est passé depuis notre dernier catalogue. Je le fais toujours avec la même illusion que celle qui nous caractérise depuis si longtemps.

De nouveaux créateurs font désormais partie de l'équipe, Arik Levy et Inma Bermúdez. Ils apportent tous et chacun une vision cosmopolite et actuelle de notre produit. Nous sommes présents sur les cinq continents et implantés à New York et à Abu Dhabi. Nous réalisons d'importants projets qui nous ont permis d'acquérir une plus grande expérience ainsi qu'une conception plus globale.

Nous avons été présents dans de nombreux salons et événements internationaux qui ont accueilli notre passion pour le travail bien fait. Mais aussi des revues comme Interior Design, Surface ou Wallpaper qui ont parlé de nos projets.

Nous avons renforcé notre service de « tapis à la carte » car nous savons que chaque projet est unique et que chaque création doit pouvoir être personnalisée jusqu'au moindre détail.

Nous avons créé notre service logistique « porte à porte » pour que nos clients n'aient à se centrer que sur leur propre travail.

Des entreprises internationales ont certifié la qualité de nos produits ainsi que les exigences techniques nécessaires à nos projets. Engagement éthique : RUGMARK qui certifie la non-utilisation de main d'oeuvre infantile dans l'élaboration de nos tapis.

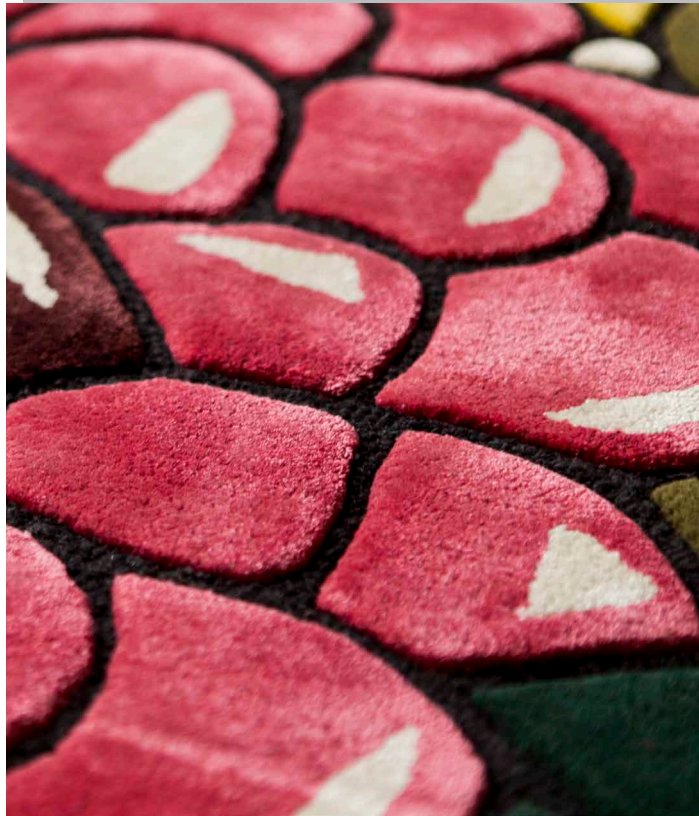
Nous apportons une grande illusion à notre projet qui, sans vos efforts et ceux de l'équipe de NOW Carpets, n'aurait jamais été possible.

Ne perdons jamais notre passion pour le travail bien fait et, bien évidemment, notre passion pour les tapis.

Merci énormément.



# MANUFACTURING SYSTEMS



## Hand Tufted

This is a manual technique in which an artisanal tool is used to punch strands of wool into a stretched cotton or jute canvas to create different definitions and pile heights.

## Hand Knotted

This is a manual weaving technique on vertical looms that consists of hand tying knots. The greater the number of knots the better defined the design is. This system allows detailed creations to be produced and the carpets last longer.







## Hand Loom knotted

Using a manually operated loom, warp and weft threads are interwoven to achieve different finishes and textures produced with different materials.



## Woven Kilim

A system of interwoven threads on a flat surface and which is popularly known as kilim. Some of our outdoor carpets have been produced with this system using recycled polyester.

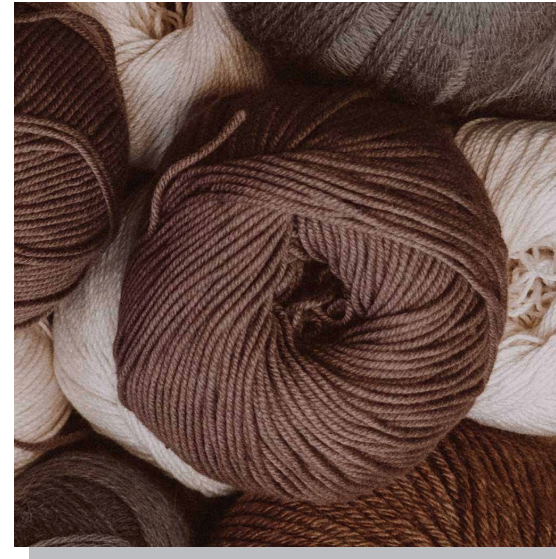


# MATERIALS

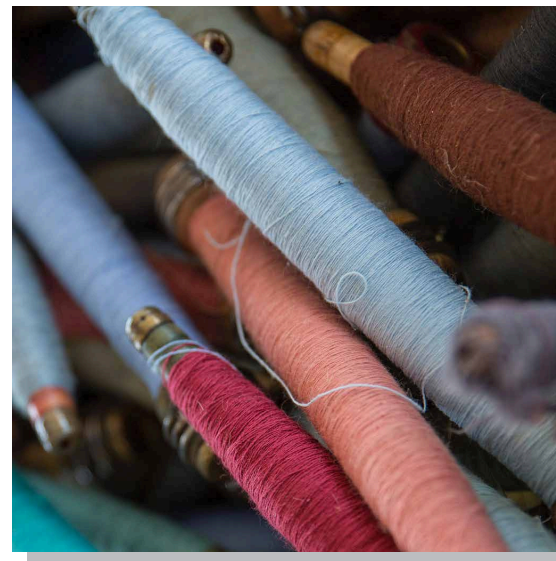
Wool



Polypropylene



Bamboo silk



Recycled polyester



# Designers

## Diseñadores

Collaborate with great designers bring fresh air sharing knowledge to achieve the excellence.



Miguel Paracuellos



Anna Muravina



Ignasi Soler



Modo arquitectura



Genna Weiner



Arik Levy

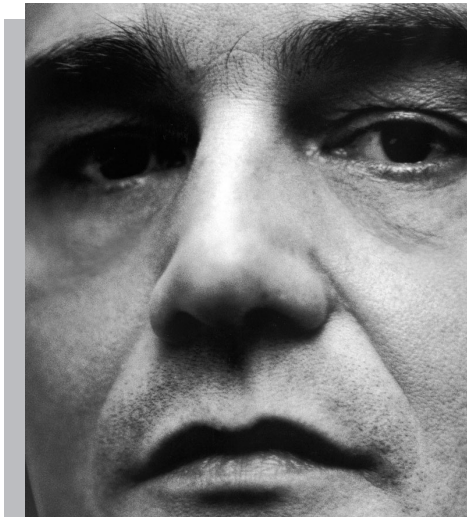


Inma Bermúdez



Andreas Charalambous





*Christian Ghion*



*Romero y Vallejo*



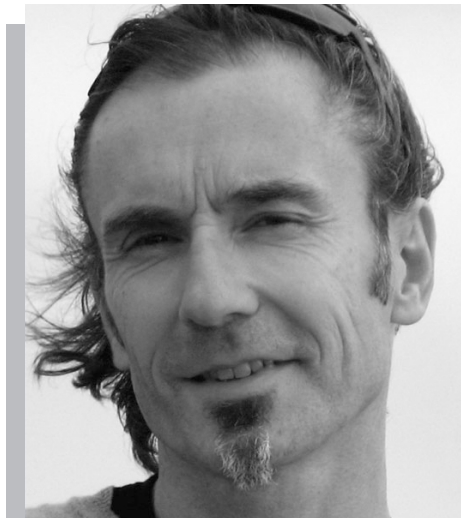
*Jose Albors*



*Moneo Brock*



*Francesc Rifé*



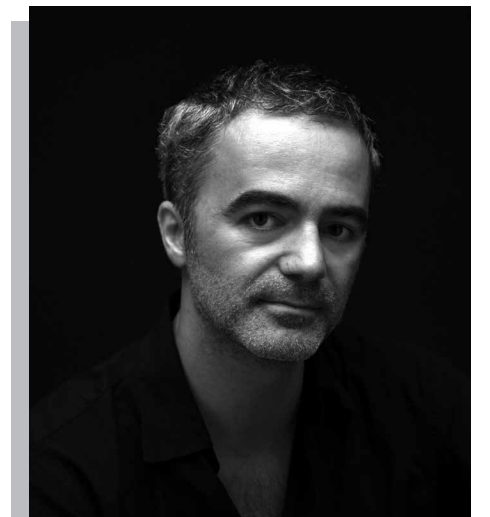
*Michael Banks*



*Yumi Endo*



*Rafael Alvarez*



*Claudio Colucci*



*Stephanie Goto*



# COLLECTIONS

HAND-KNOTTED ..... P20

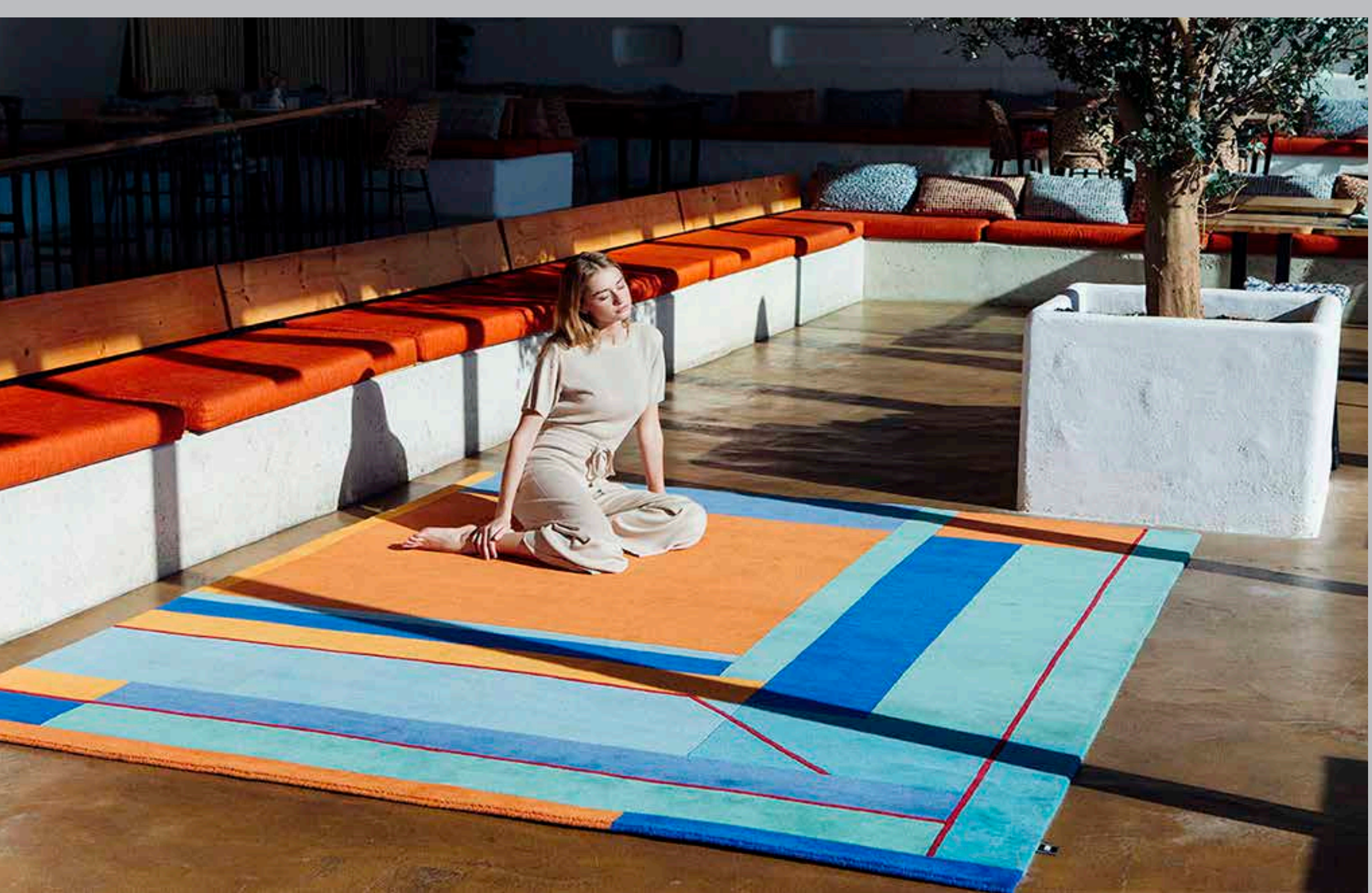
HAND-TUFTED ..... P67

BASIC CONTRACT ..... P111

IN & OUTDOORS ..... P131



# HAND-KNOTTED





# RADICAL

Designed by Modo Arquitectura.



Radical RAD-1





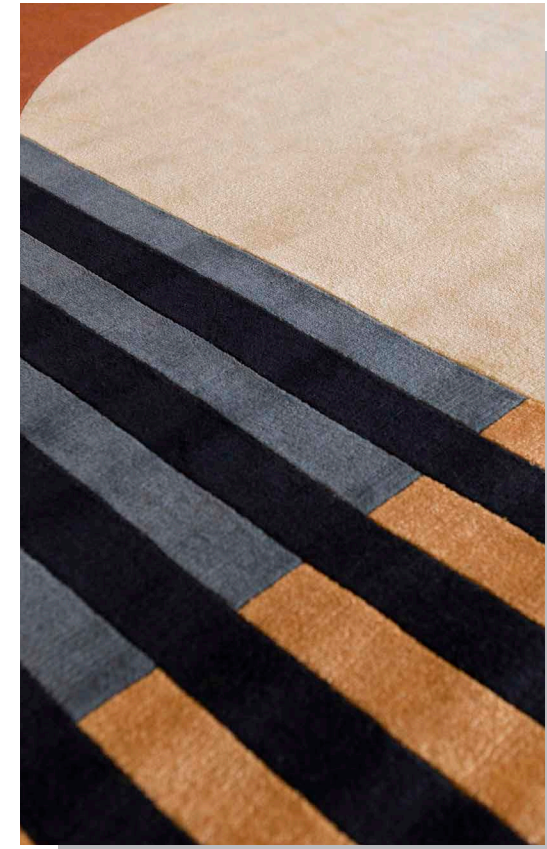
Raddical  
RAD-2



Radical RAD-2







Raddical  
RAD-2



Radical RAD-1



# THE SEA & THE SAND

Designed by Rafael Alvarez.



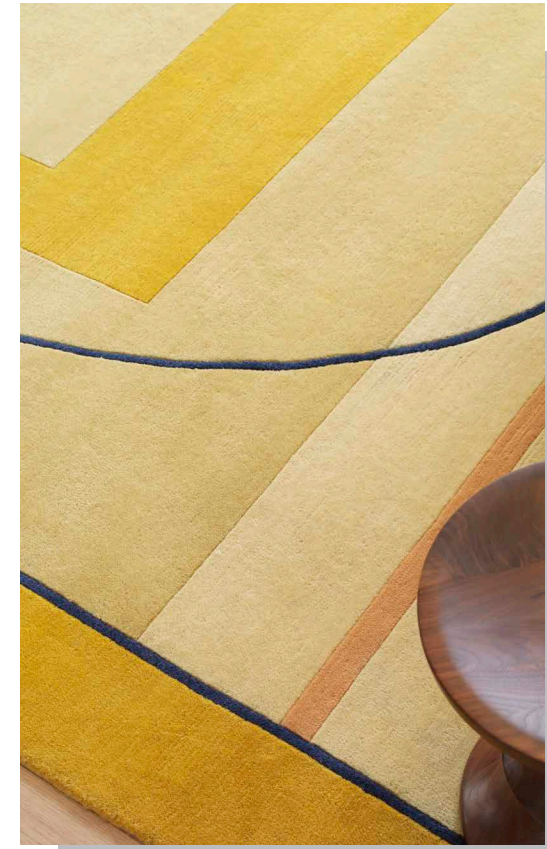
*The Sea and the Sand*  
SSA-01





*The Sea and the Sand*  
SSA-01 and SSA-3





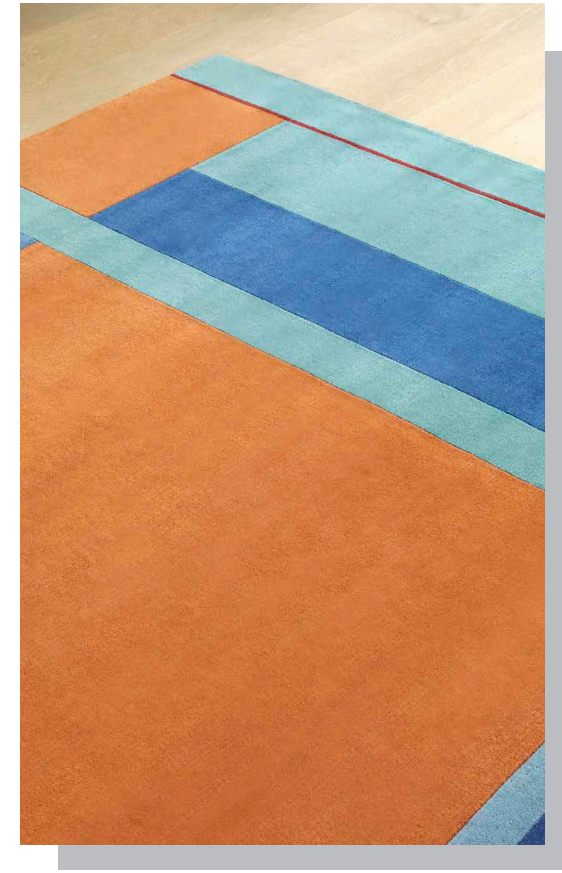
The Sea and the Sand  
SSA-03





The Sea and the Sand  
SSA-02 and SSA-3



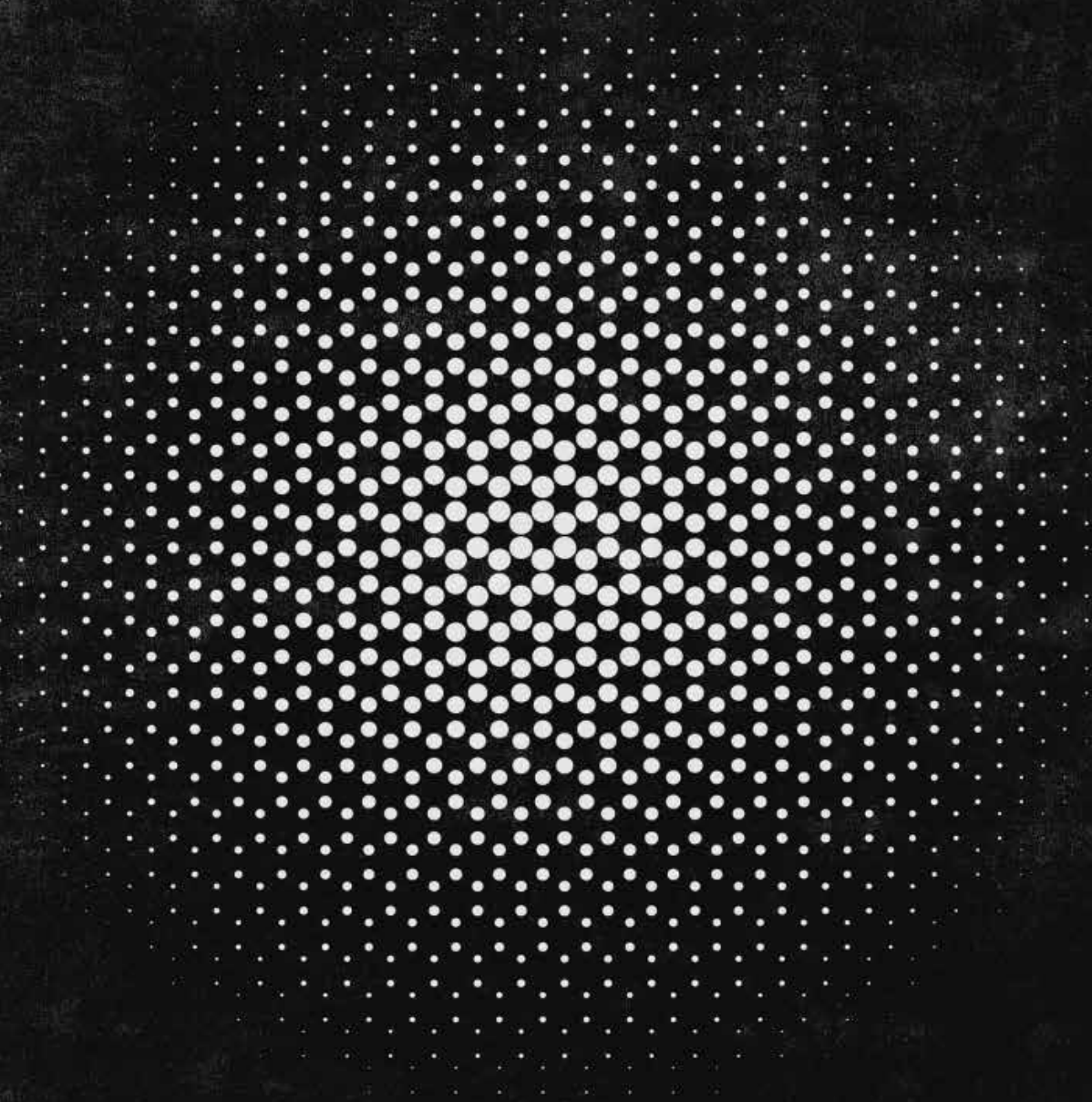


*The Sea and the Sand*  
SSA-01



# AKARI

Designed by Yumi Endo.



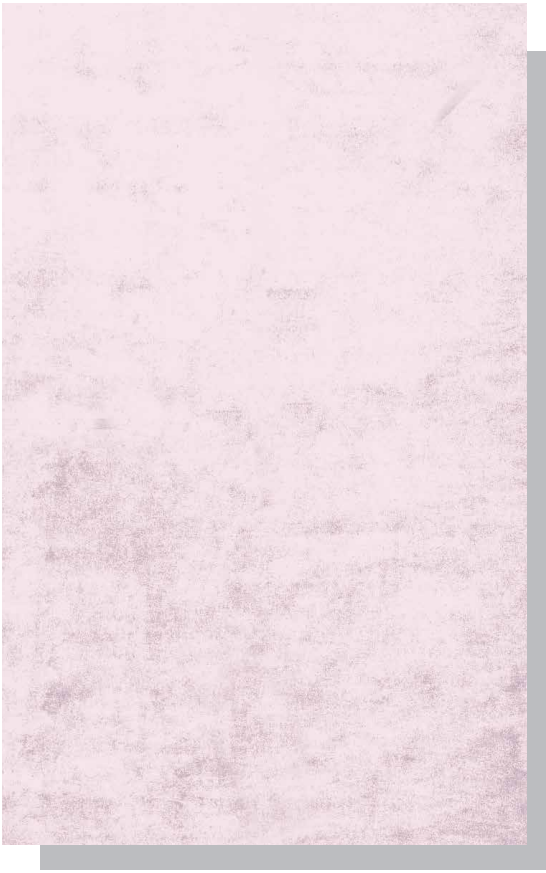




A vertical red bar is positioned on the left side of the image, set against a background with a fine, woven texture. The bar is solid red and extends from the top to the bottom of the frame.

# FIUMI

Designed by Jose Albors.





# CORSO

Designed by Jose Albers.









# LANGUAGE

Designed by Stephanie Goto.



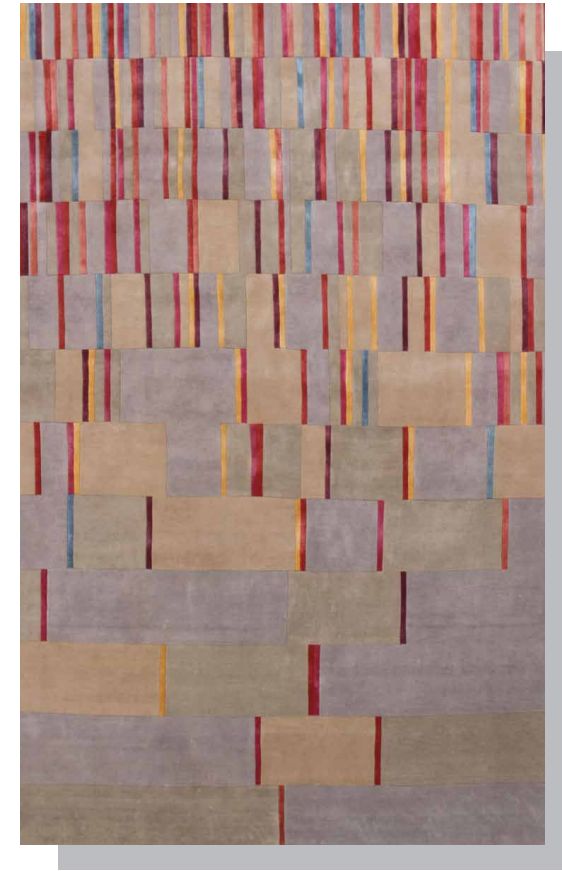




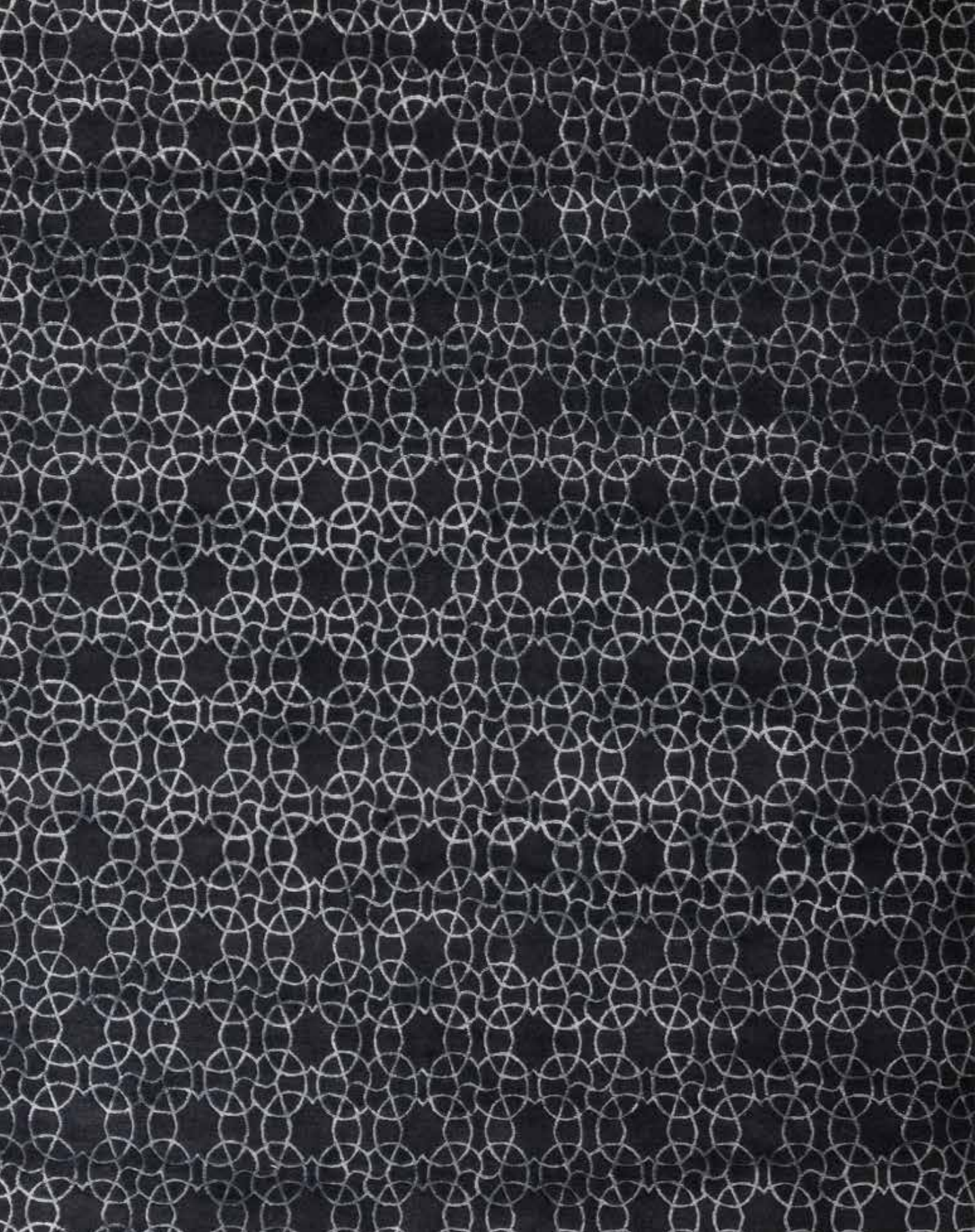
# MILES

Designed by Moneo Brock.









# KAILA

Designed by Francesc Rifé.







# HAND-TUFTED







# RADICAL

Designed by Modo Arquitectura.





Bloom BLO-1





# RADICAL

Designed by Modo Arquitectura.





Bloom BLO-1



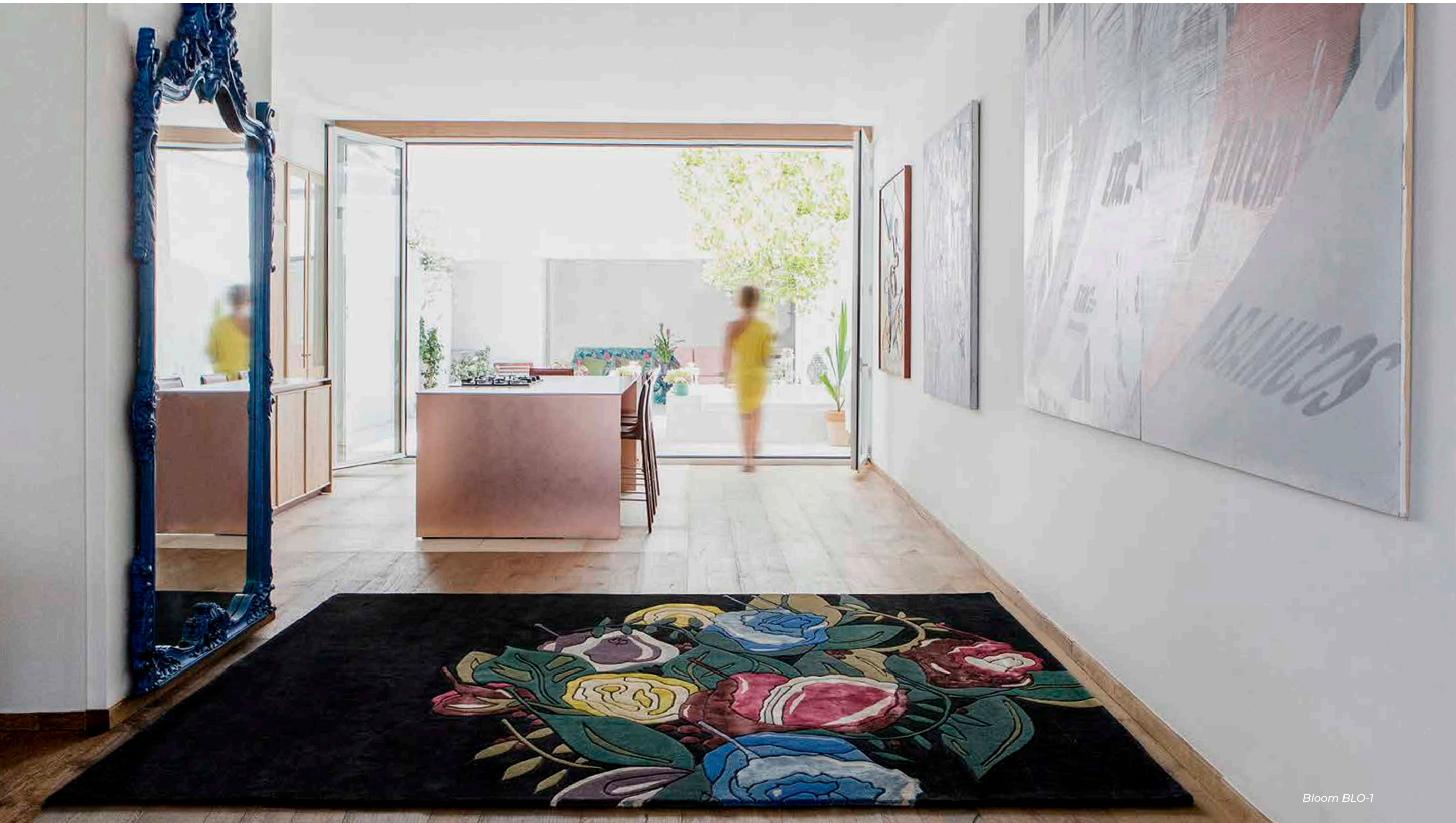
# BLOOM

Designed by Genna Weiner.



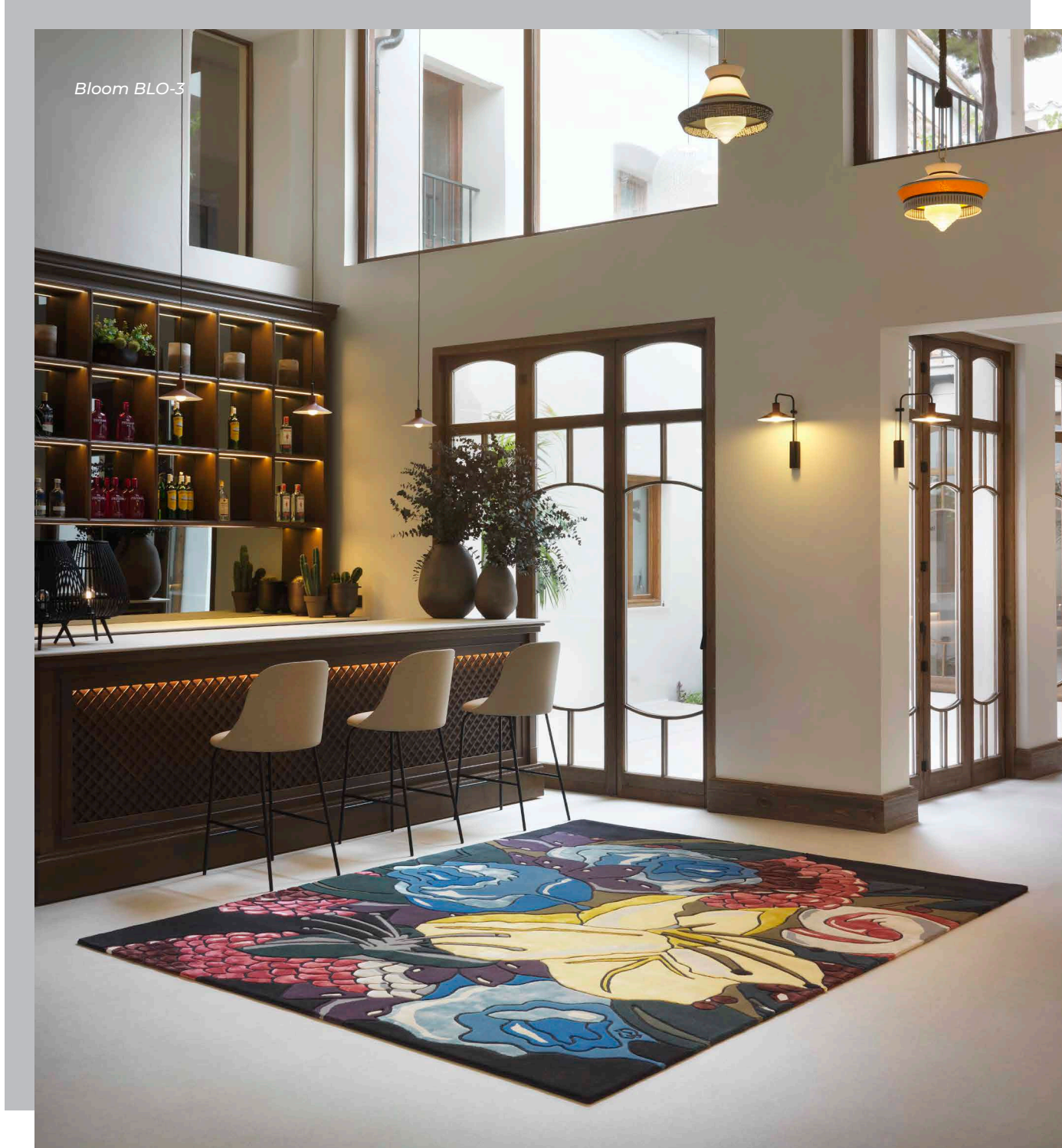
Bloom BLO-2





Bloom BLO-1







# LANDSCAPE

Designed by Arik Levy.

*Landscape Brazil*





*Landskape Brazil*



*Landskape Andalucia*





*Landskape Huelva*



*Landskape Monegros*

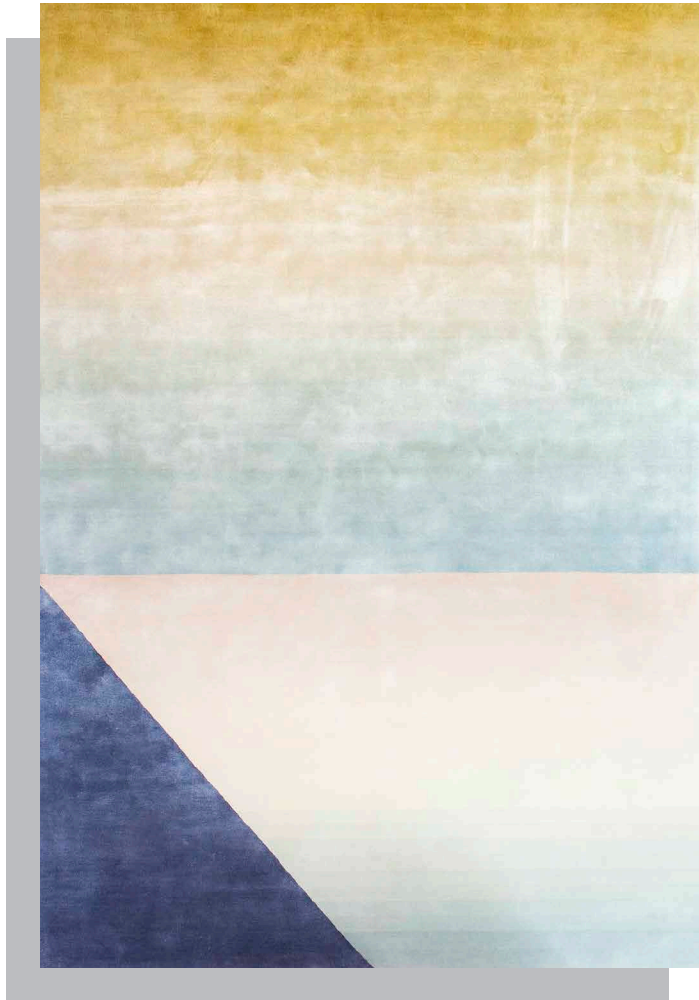




KO

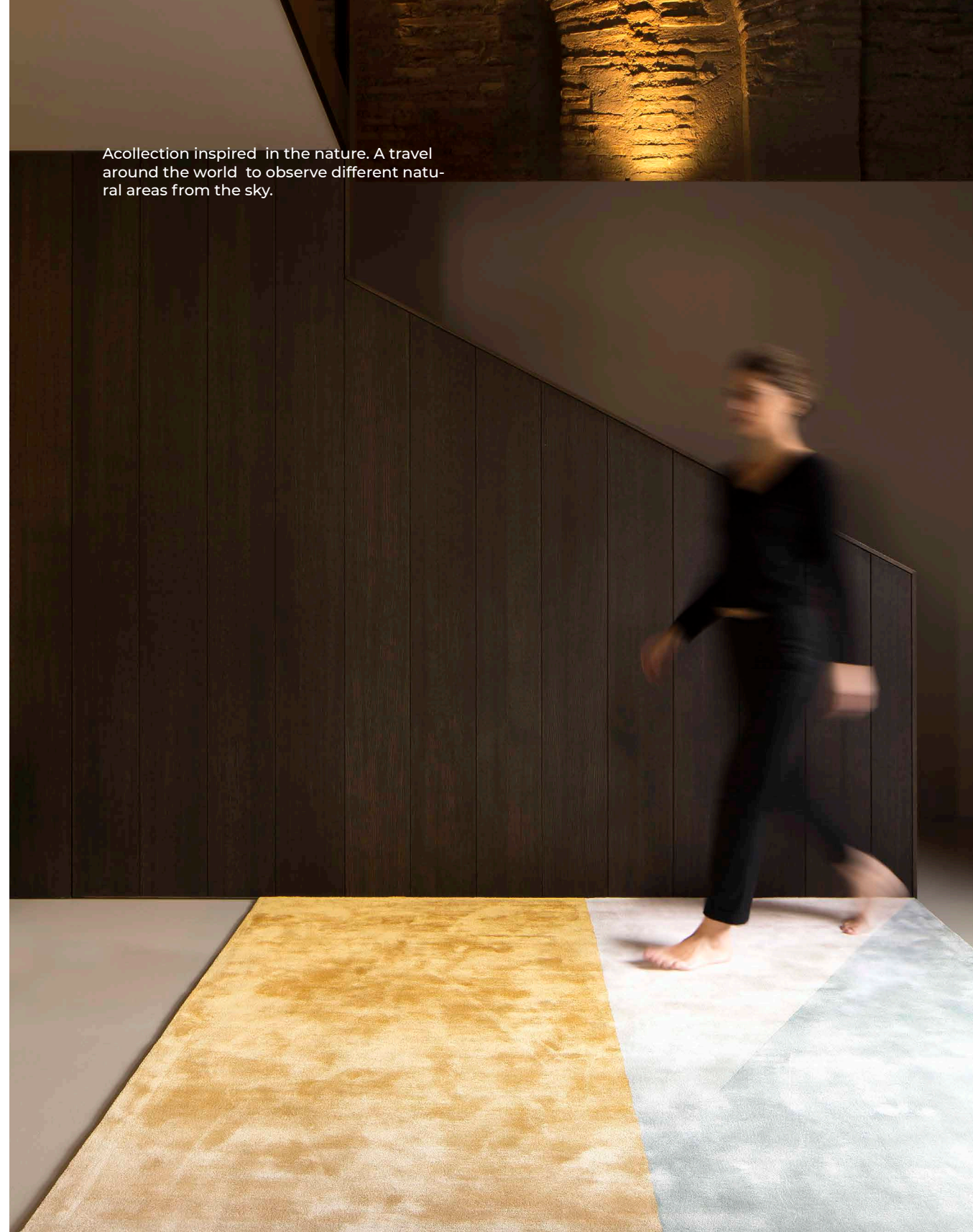
Designed by Francesc Rifé.





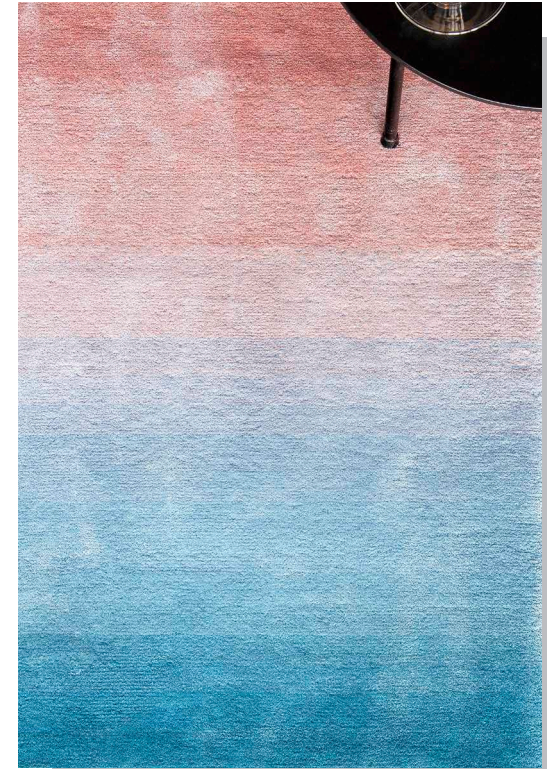
KO-2

A collection inspired in the nature. A travel around the world to observe different natural areas from the sky.





KO-4



KO-5





# FUNGHI

Designed by Francesc Rifé.









# MASHA

Designed by Anna Muravina.









# KIDS OF THE OCEAN

Designed by Anna Muravina.









# SQUEEZE

Designed by Claudio Colucci.

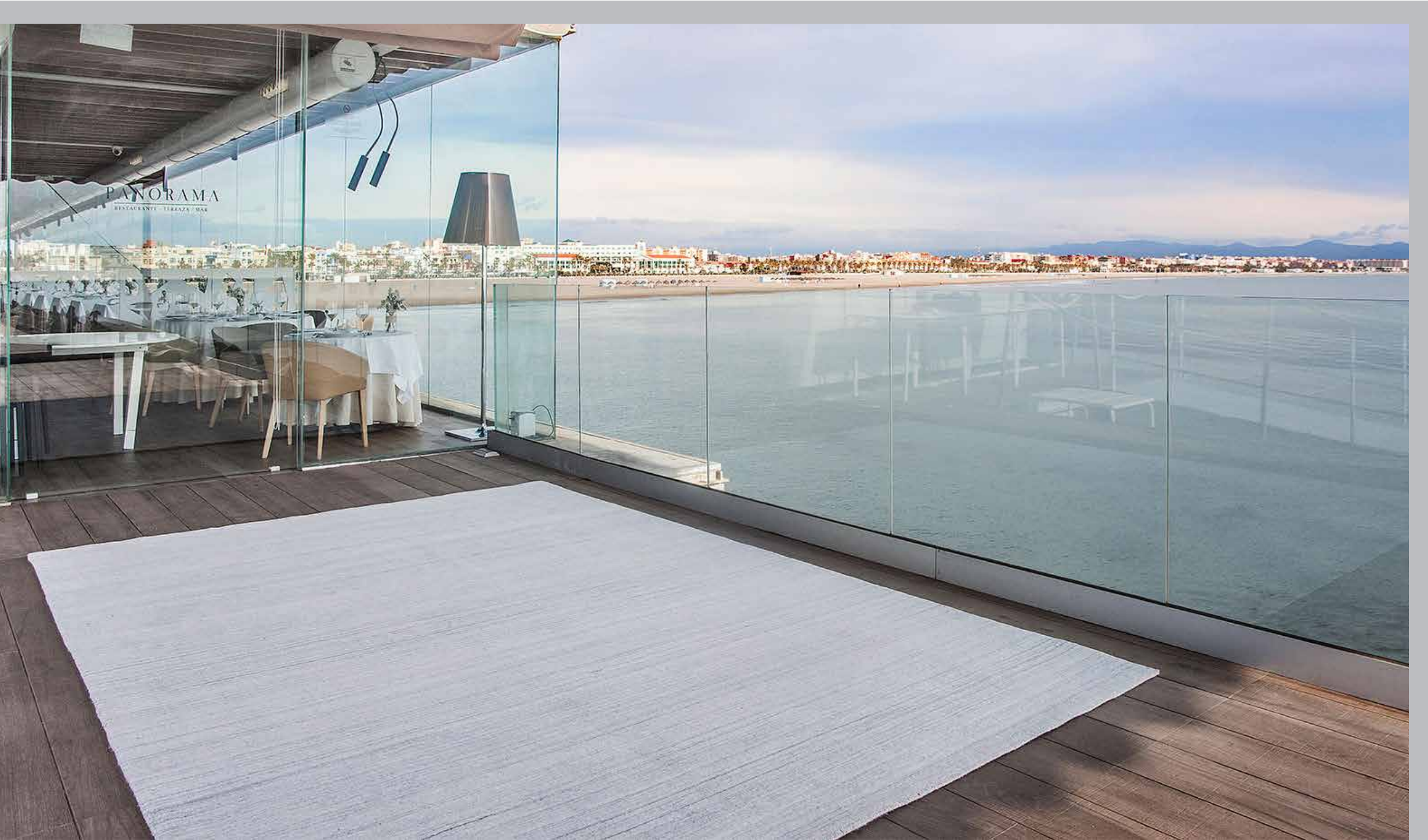




Squeeze SQ-01 Rounded



# BASIC CONTRACT







# BASIC BAMBOO

Designed by My Now.













# GOBI

Designed by My Now.









# Onn

Designed by My Now.









# DUNE IN & OUTDOOR

Designed by My Now.







# IN & OUTDOOR





Palma  
PL-08



# PALMA COLLECTION

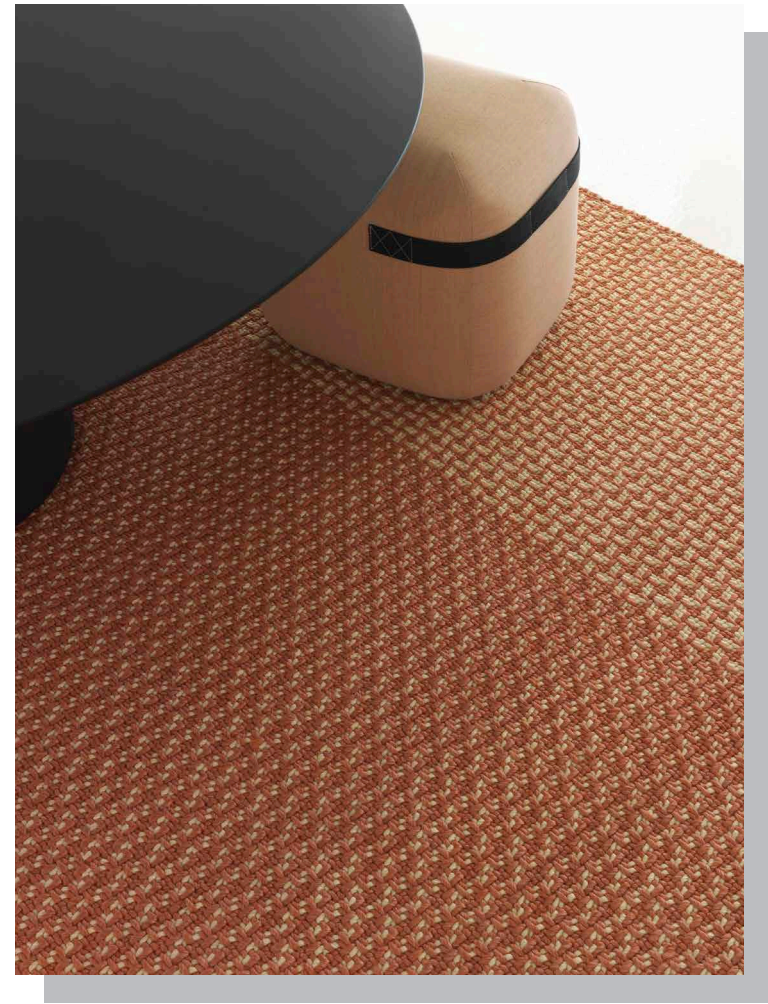
Designed by My Now and Romero y Vallejo.



Palma  
PL-07









Palma  
PL-03







# PALMA ROUNDED

Designed by Romero y Vallejo.





Palma Rounded  
PLR-02



Palma Rounded  
PLR-01





# MIAMI

Designed by My Now.









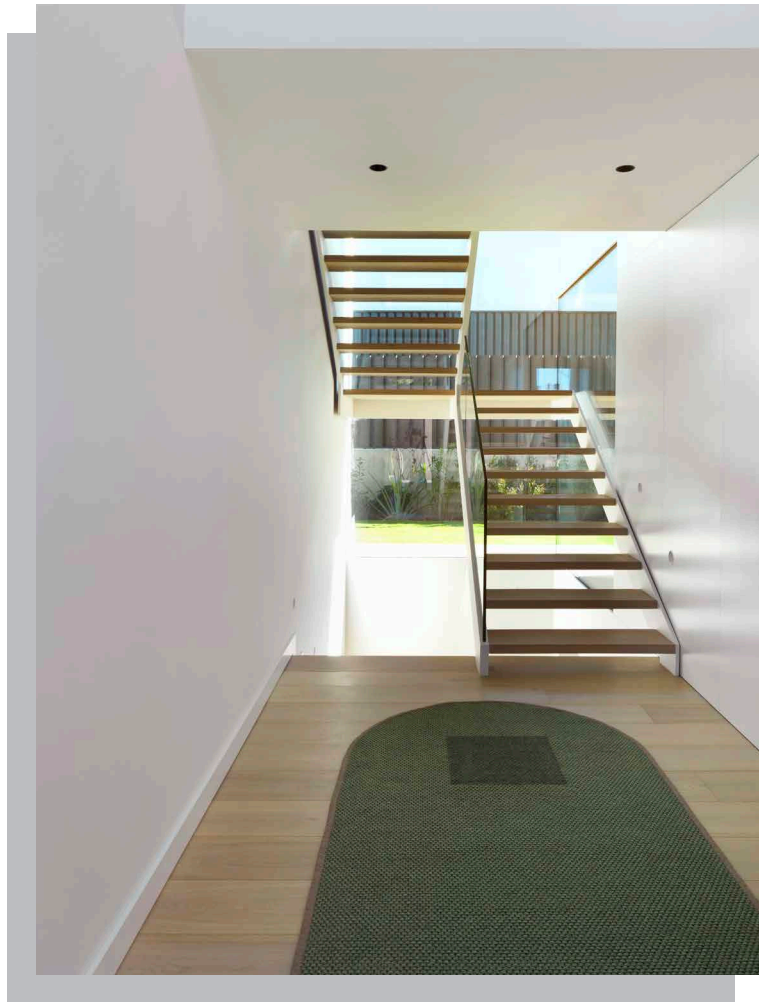




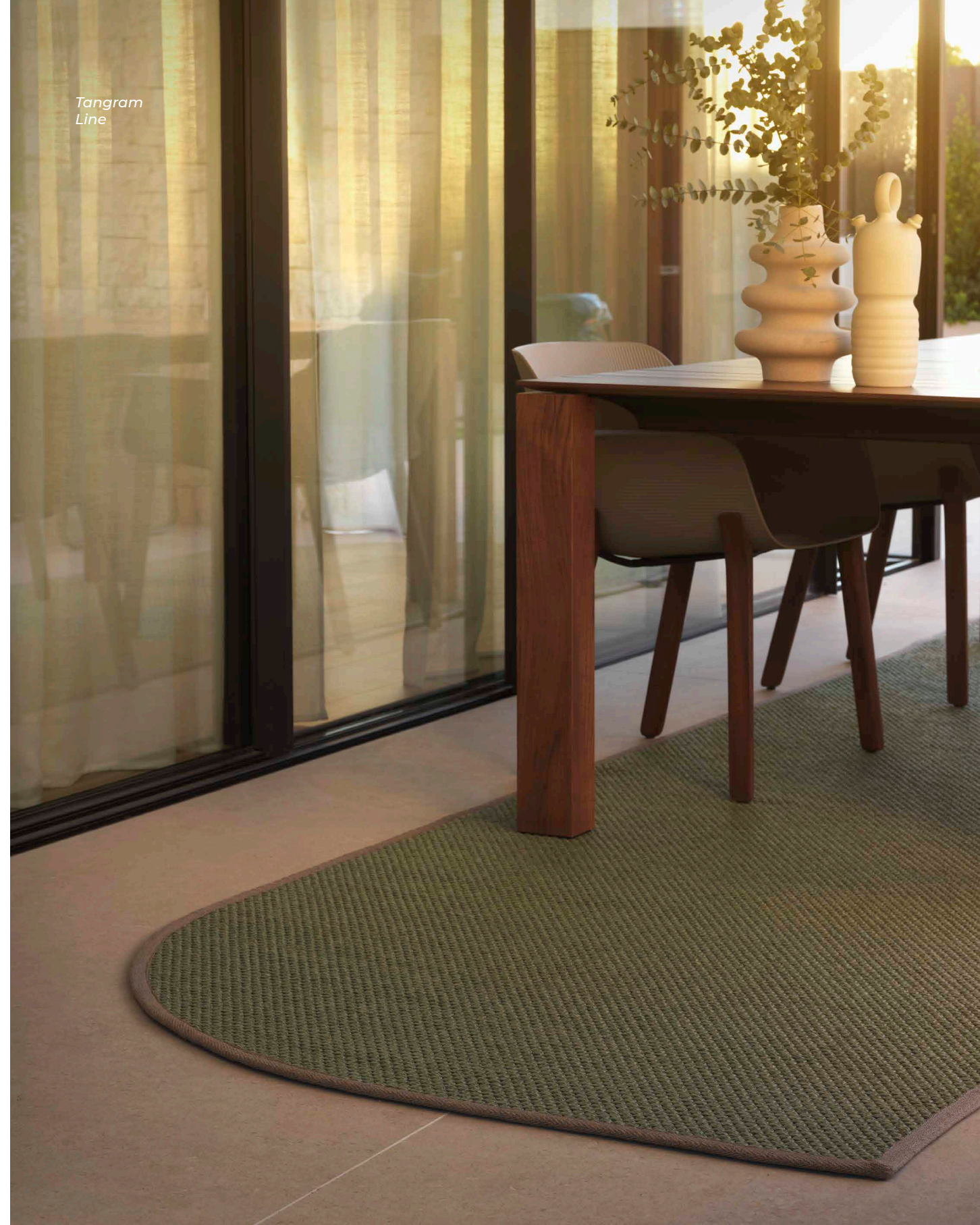
# TANGRAM COLLECTION

Designed by La Nonna.





Tangram  
Line



Tangram  
Line





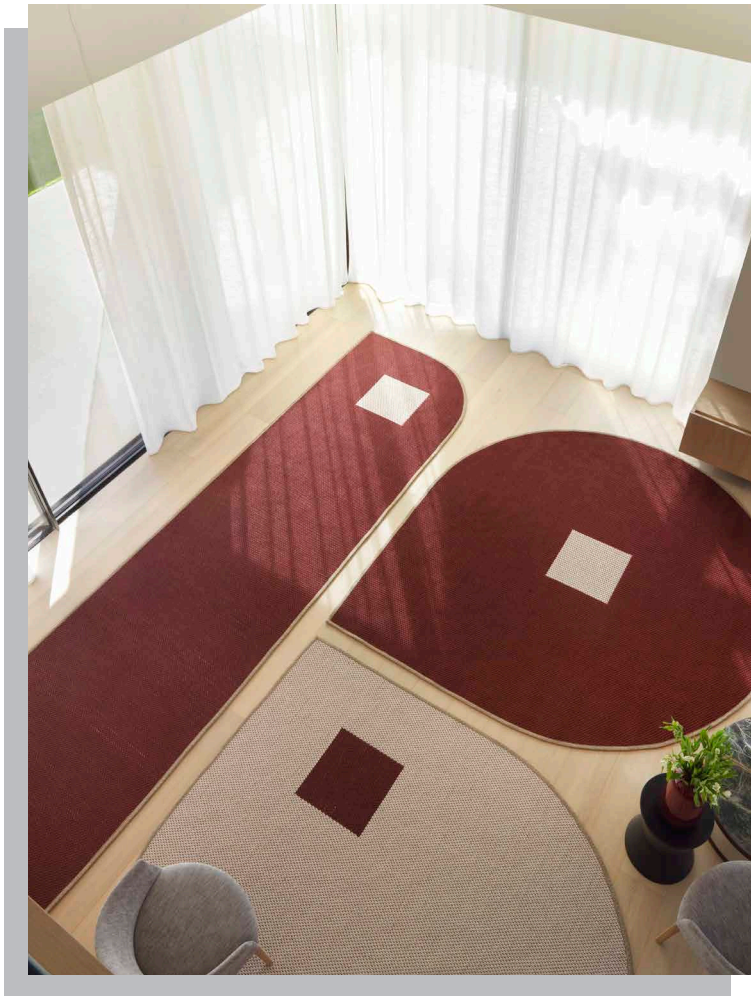
Tangram  
Line and Moon



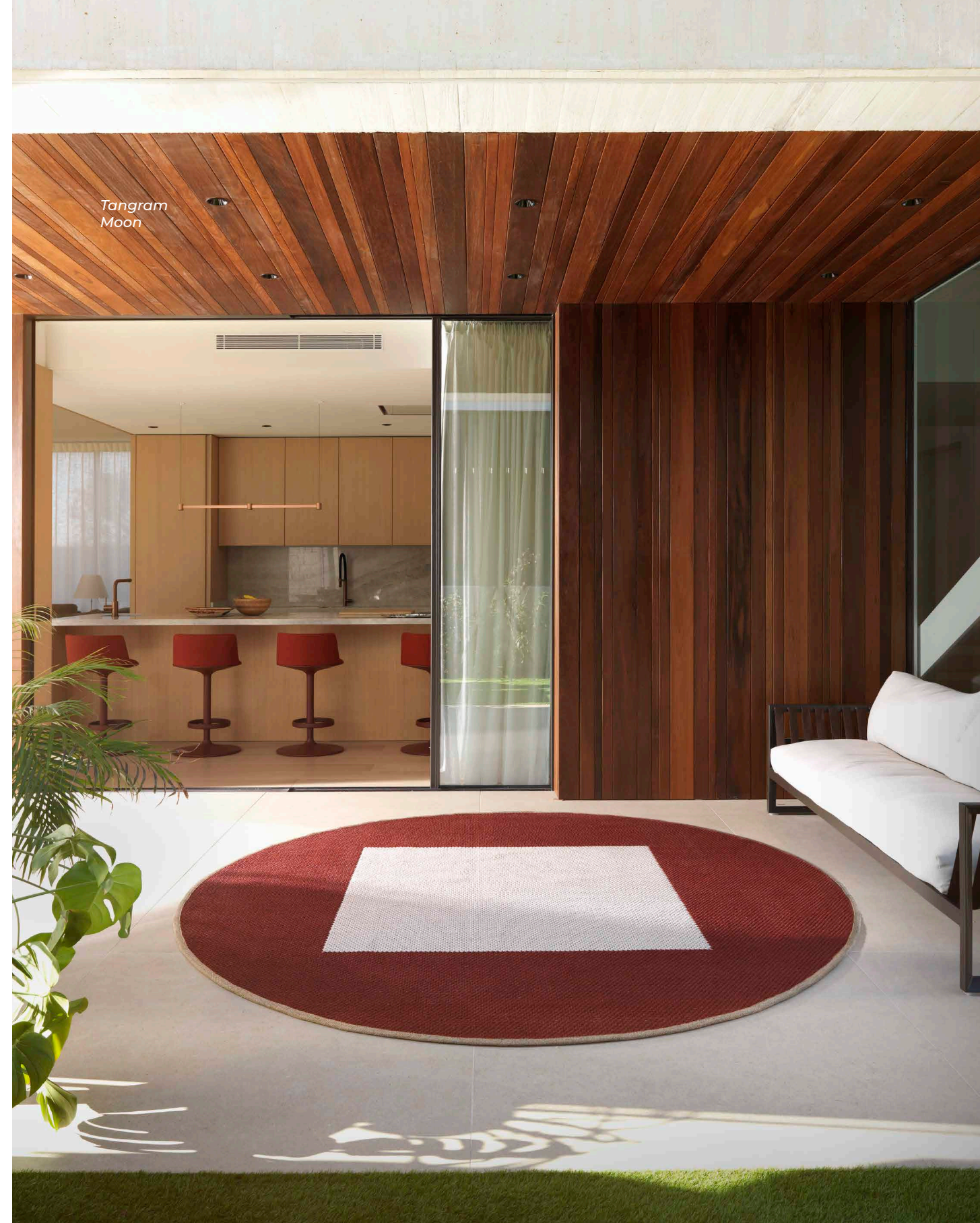
Tangram  
Line







Tangram  
Line and Tear







# MAUI COLLECTION

Designed by Ignasi Soler.





Tangram  
Line







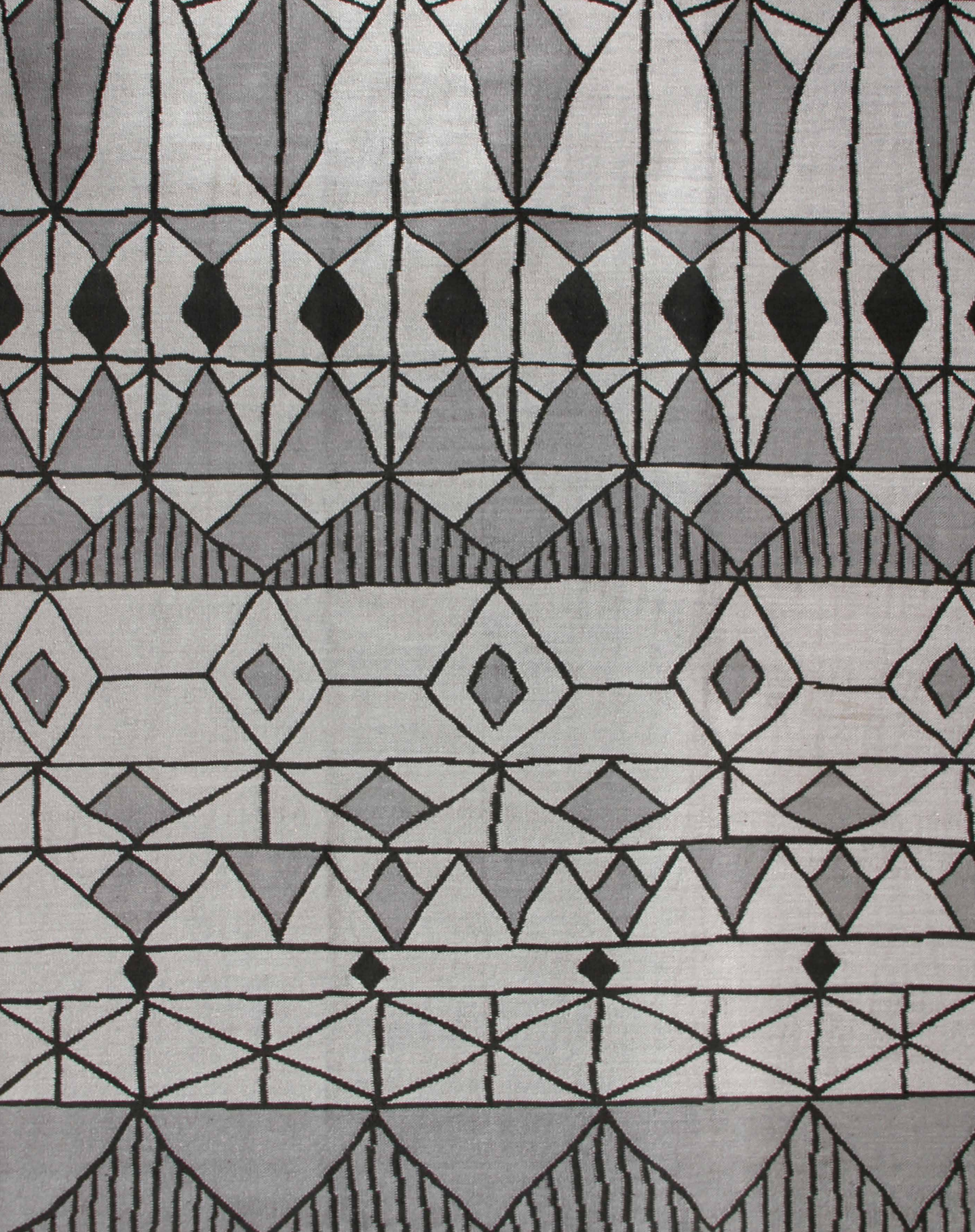
Tangram  
Line and Moon



Tangram  
Line







# ETNIC KILIM

Designed by Inma Bermúdez.









# MOSAIC KILIM

Designed by Inma Bermúdez.









# TRIANGLES KILIM

Designed by Inma Bermúdez.







# We are custom carpets

Because every project is unique and worthy of special attention, we have increased our CUSTOM CARPET service to offer personalized carpets tailored to each customer's needs, either for individual projects or contract projects. Personalisation down to the very last detail to suit your needs and tastes. And with very short delivery times.

Porque cada proyecto es único y merece una atención especial, hemos reforzado nuestro servicio de ALFOMBRAS A LA CARTA, ofreciendo la posibilidad de realizar alfombras personalizadas y a la medida de cada cliente ya sea para proyectos individuales como para contract. Personalización hasta el último detalle según sus necesidades y gustos. Y con un plazo de entrega muy breve.

## YOUR OWN DESIGNS (CUSTOM RUGS) TUS PROPIOS DISEÑOS (ALFOMBRAS A LA CARTA)

MATERIALS: WOOL, BAMBOO, VISCOSE, SILK,  
HEMP, LINEN, ETC...  
DIFFERENT SIZES / MEASURES / COLORS

MATERIALES: LANA, BAMBÚ, VISCOSA,  
SEDA, CÁÑAMO, LINO, ETC...  
DIFERENTES FORMAS / MEDIDAS / COLORES





# PROJECTS

## We are custom carpets

Now Carpets has extensive experience developing projects all over the world. For more than 30 years we have had the opportunity to collaborate on projects with partners such as Hyatt, Rich Carlton, Novotel, Mercer and many others.

Each project has a nature and we can adapt each design to the needs of the project, colors, shapes and size are customizable to fit perfectly. You can also create your own design, creating a special and unique piece.

Now Carpets tiene una gran experiencia desarrollando proyectos en todo el mundo. Durante más de 30 años hemos tenido la oportunidad de colaborar en proyectos con marcas como Hyatt, Rich Carlton, Novotel, Mercer y muchos otros.

Cada proyecto tiene una naturaleza distinta y podemos adaptar cada diseño a las necesidades del proyecto, los colores, las formas y el tamaño son personalizables para encajar a la perfección con el entorno. Además puedes crear tu propio diseño, creando una pieza especial y única.





# W Barcelona







Tangram  
Line and Tear



Tangram  
Moon









# Ritz Carlton St. Thomas

















# HOTEL RADISSON BLUE BÉKER BUDAPEST













# HOTEL MERCER SEVILLA

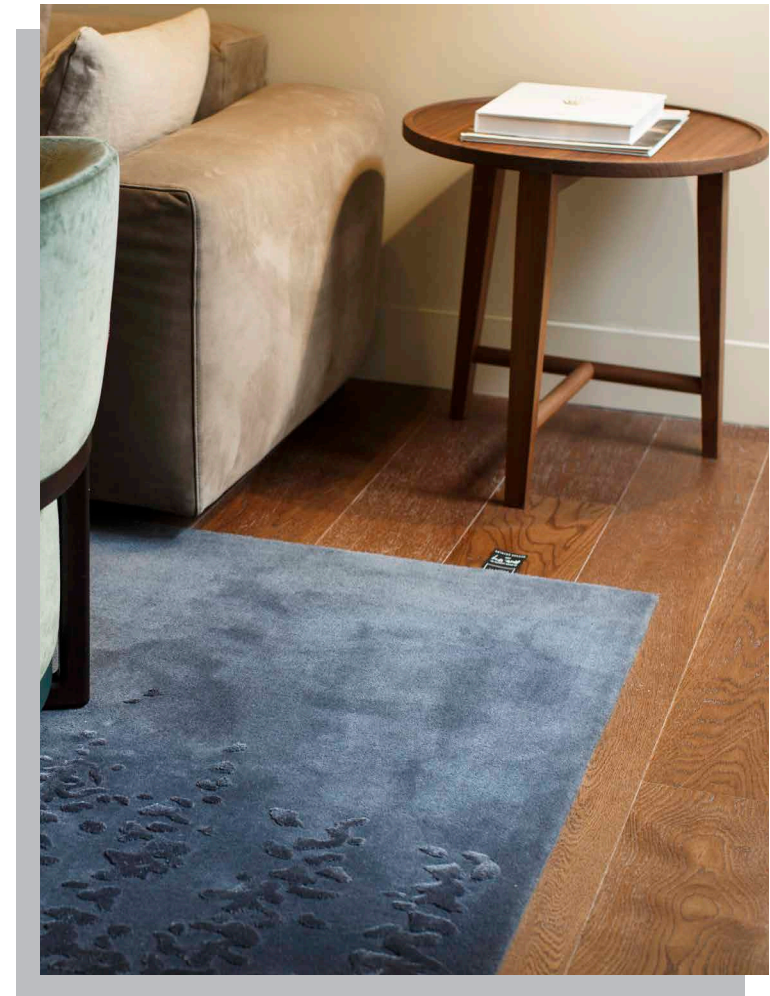
















# HOTEL MERCER BARCELONA

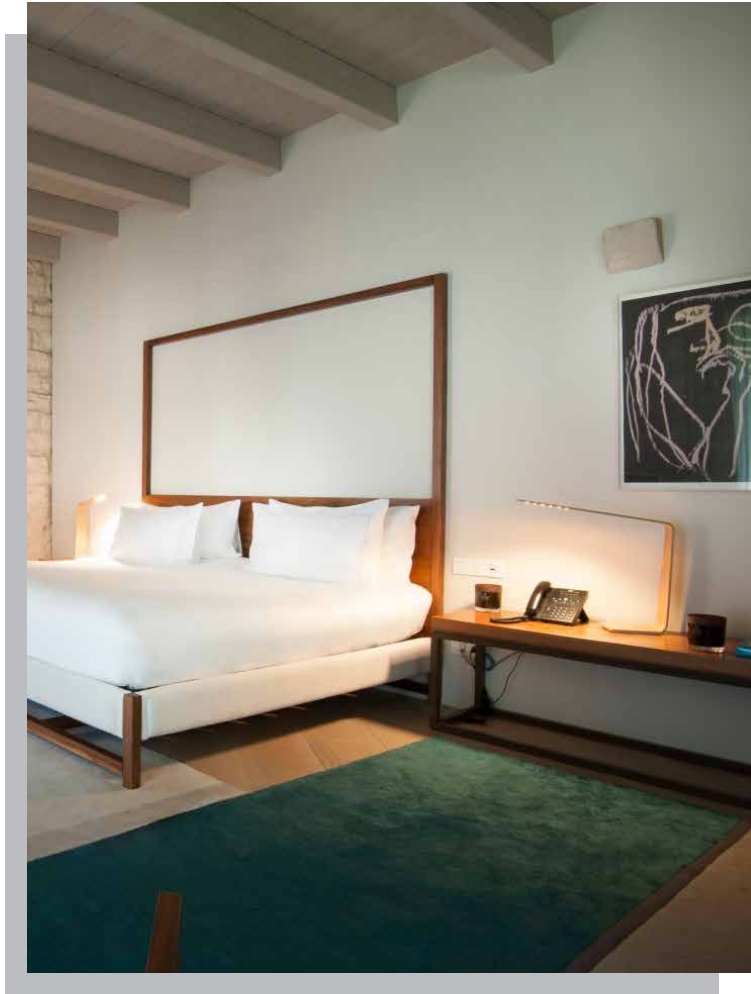














# HOTEL CAMAYANNE CONAKRY













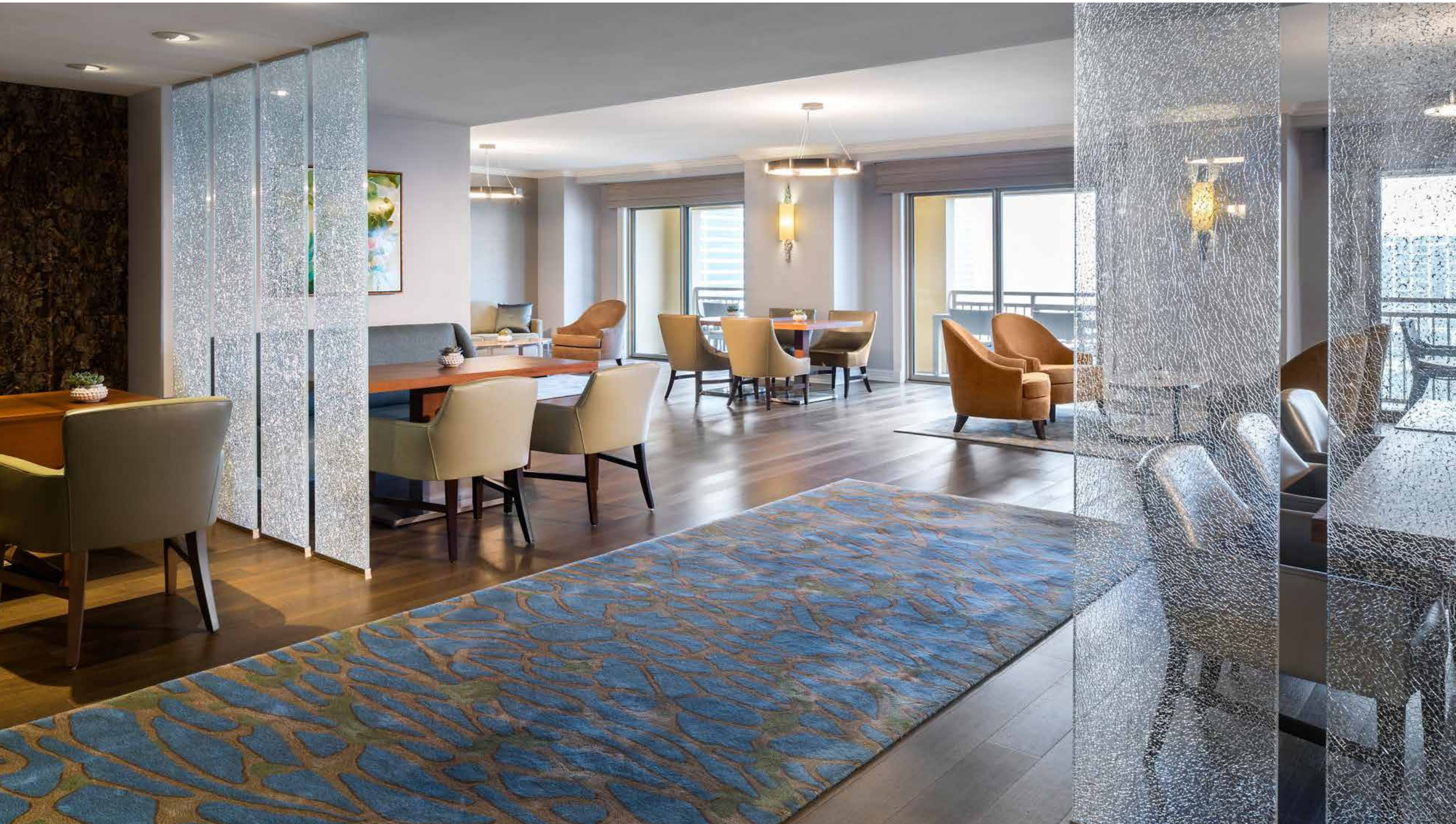




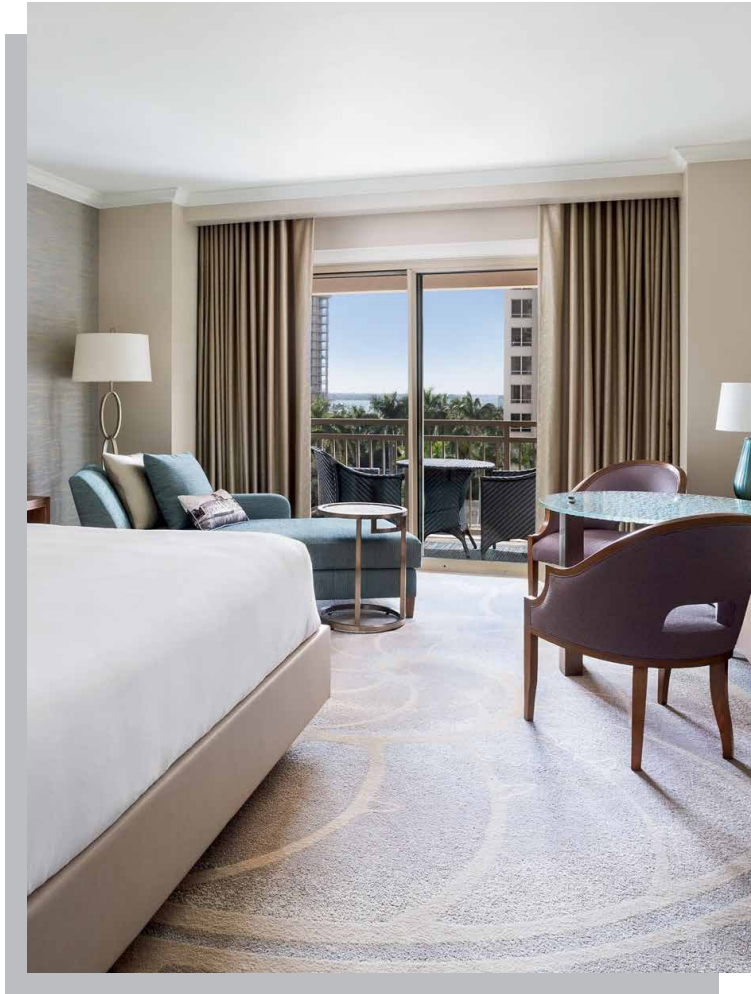


# RITZ CARLTON SARATOSA











# HOTEL GOLF ALMERIMAR





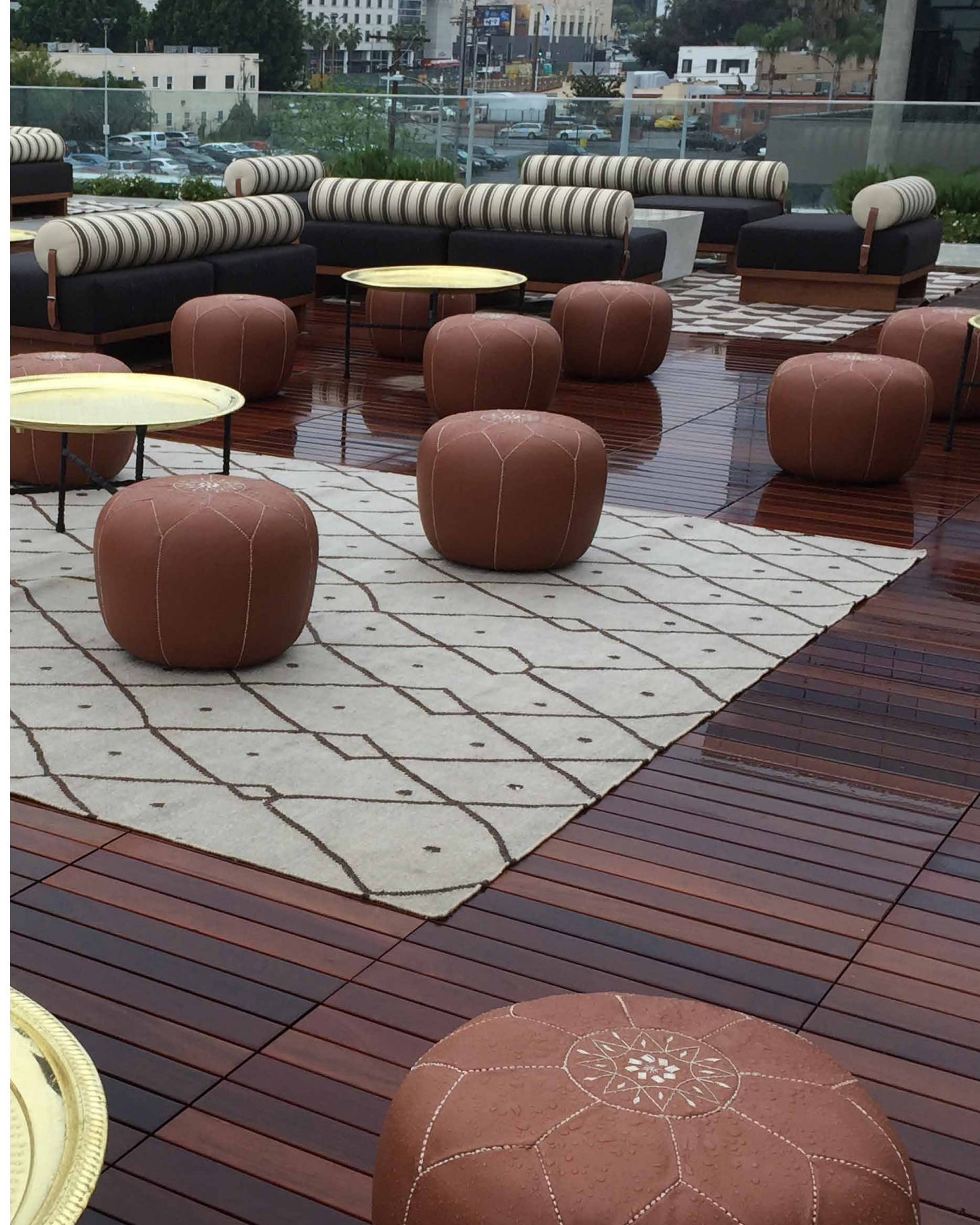






# NEUEHOUSE LOS ANGELES







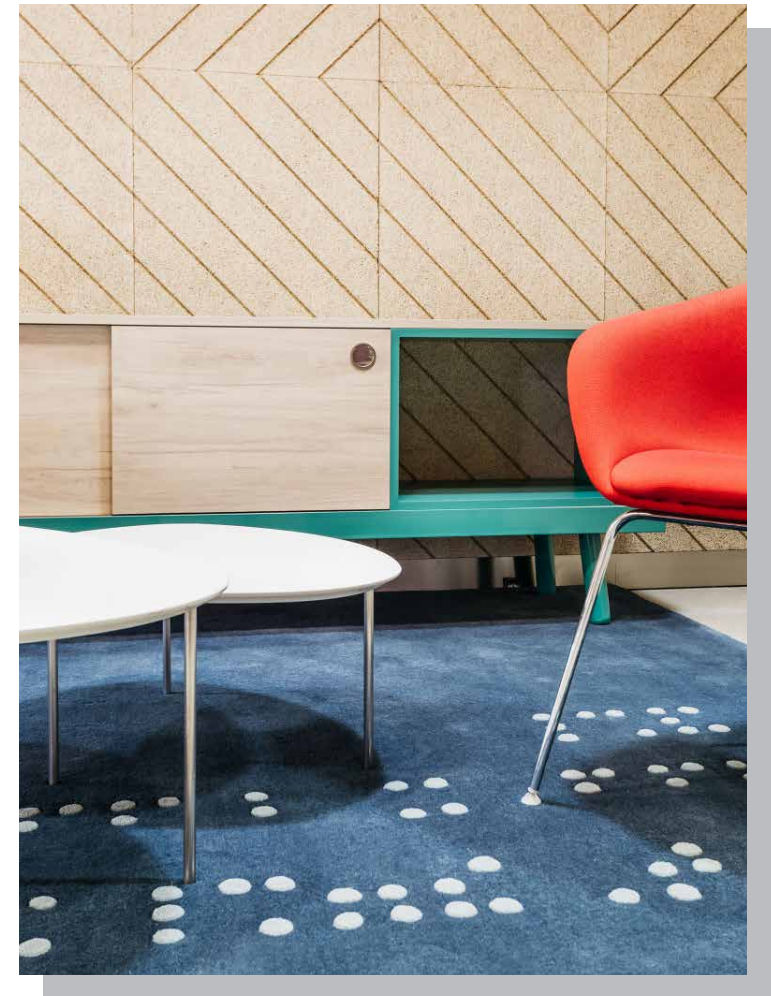




# COCA-COLA HQ MADRID













# TECHNICAL

THE SEA AND THE SAND

BLOOM

RADICAL

LANDSKAPE

KO

KAILA

MILES

ALPHABET

EGO

FUNGHI

LEAF

ONA

RING

SEA SEA

LUCKY YOU

KIDS OF THE OCEAN

MASHA

GRISHA

VERA

LANGUAGE

TRIANGULOS

MOSAIC

ETNICA

AKARI

BOTAN

CORSO

ICEBERG

CONNECTION

SABIA

FIUMI

MIRE

SKULL

SKYSCRAPER

SQUEEZE

FILAMENTS

CHA-CHA

BASIC BAMBOO SILK

TANGER

GOBI

DUNE IN& OUTDOOR

ON

## IN & OUTDOOR

Palma

Palma Rounded

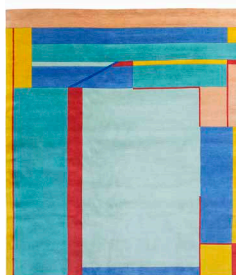
Miami

Tangram



## The sea and the sand

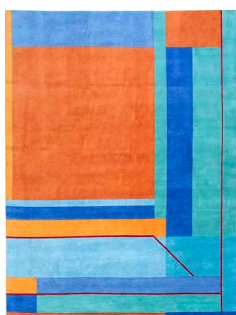
HAND KNOTTED 80 LINES



### SSA-1

Customizable

Designer | Diseñador | Designer: Rafael Alvarez.  
 100% wool nz | 100% lana nz | 100% laine nz.  
 Size | Tamaño | Mesures: 6'x9'-8'x10'-9'x12' | 170x240 - 200x300 - 250x300  
 Height | Altura | Hauteur: 10mm | 0,39in  
 Weight | Peso | Poids: 13oz/ft<sup>2</sup> | 4.000 gr/m<sup>2</sup>  
 Colours | Colores | Couleurs: 820-953-913-295-840-154-897-954



### SSA-2

Customizable

Designer | Diseñador | Designer: Rafael Alvarez.  
 100% wool nz | 100% lana nz | 100% laine nz.  
 Size | Tamaño | Mesures: 6'x9'-8'x10'-9'x12' | 170x240 - 200x300 - 250x300  
 Height | Altura | Hauteur: 10mm | 0,39in  
 Weight | Peso | Poids: 13oz/ft<sup>2</sup> | 4.000 gr/m<sup>2</sup>  
 Colours | Colores | Couleurs: 971-954-953-149-817-913-879



### SSA-3

Customizable

Designer | Diseñador | Designer: Rafael Alvarez.  
 100% wool nz | 100% lana nz | 100% laine nz.  
 Size | Tamaño | Mesures: 6'x9'-8'x10'-9'x12' | 170x240 - 200x300 - 250x300  
 Height | Altura | Hauteur: 10mm | 0,39in  
 Weight | Peso | Poids: 13oz/ft<sup>2</sup> | 4.000 gr/m<sup>2</sup>  
 Colours | Colores | Couleurs: 270-149-209-288-872-269

## Bloom

HAND TUFTED



### BLO-1

Customizable

Designer | Diseñador | Designer: Genna Weiner.  
 Lana natural + bambú seda | Natural wool + bamboo silk | Laine naturelle + soie bambou.  
 Size | Tamaño | Mesures: 6'x9'-8'x10'-9'x12' | 170x240 - 200x300 - 250x300  
 Height | Altura | Hauteur: 0,55in | 14mm  
 Weight | Peso | Poids: 14oz/ft<sup>2</sup> | 5.250 gr/m<sup>2</sup>  
 Colours | Colores | Couleurs: 806-876-2904-953-289-249-846-854-874-814-829-101-909-973



### BLO-2

Customizable

Designer | Diseñador | Designer: Genna Weiner.  
 Natural wool + bamboo silk | Lana natural + bambú seda | Laine naturelle + soie bambou.  
 Size | Tamaño | Mesures: 6'x9'-8'x10'-9'x12' | 170x240 - 200x300 - 250x300  
 Height | Altura | Hauteur: 0,55in | 14mm  
 Weight | Peso | Poids: 14oz/ft<sup>2</sup> | 5.250 gr/m<sup>2</sup>  
 Colours | Colores | Couleurs: 806-876-2904-953-289-249-846-854-874-814-829-101-909-120-870-299-973



### BLO-3

Customizable

Designer | Diseñador | Designer: Genna Weiner.  
 Natural wool + bamboo silk | Lana natural + bambú seda | Laine naturelle + soie bambou.  
 Size | Tamaño | Mesures: 6'x9'-8'x10'-9'x12' | 170x240 - 200x300 - 250x300  
 Height | Altura | Hauteur: 0,55in | 14mm  
 Weight | Peso | Poids: 14oz/ft<sup>2</sup> | 5.250 gr/m<sup>2</sup>  
 Colours | Colores | Couleurs: 806-876-2904-953-289-249-846-854-874-814-829-101-909-973



## Radical

### HAND KNOTTED 80 LINES



#### **RAD-1**

*Customizable*

Designer | Diseñador | Designer: Modo architettura.

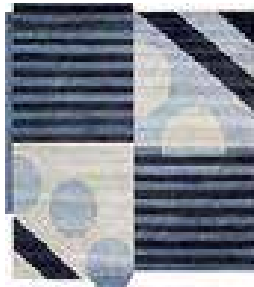
80% wool + 20% bamboo silk | 80% lana + 20% bambú seda | 80% laine nz. + 20% bambou soïée.

Size | Tamaño | Mesures: 6'x9'-8'x10'-9'x12' | 170x240 - 200x300 - 250x300

Height | Altura | Hauteur: 10mm | 0,39in

Weight | Peso | Poids: 13oz/ft<sup>2</sup> | 4.000 gr/m<sup>2</sup>

Colours | Colores | Couleurs: 921-970-812-868-890-900-909



#### **RAD-2**

*Customizable*

Designer | Diseñador | Designer: Modo architettura.

80% wool + 20% bamboo silk | 80% lana + 20% bambú seda | 80% laine nz. + 20% bambou soïée.

Size | Tamaño | Mesures: 6'x9'-8'x10'-9'x12' | 170x240 - 200x300 - 250x300

Height | Altura | Hauteur: 10mm | 0,39in

Weight | Peso | Poids: 13oz/ft<sup>2</sup> | 4.000 gr/m<sup>2</sup>

Colours | Colores | Couleurs: 825-909-981-890-870-WHITE 001



#### **RAD-3**

*Customizable*

Designer | Diseñador | Designer: Modo architettura.

80% wool + 20% bamboo silk | 80% lana + 20% bambú seda | 80% laine nz. + 20% bambou soïée.

Size | Tamaño | Mesures: 6'x9'-8'x10'-9'x12' | 170x240 - 200x300 - 250x300

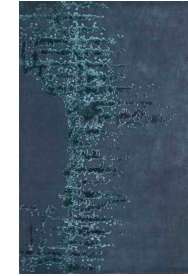
Height | Altura | Hauteur: 10mm | 0,39in

Weight | Peso | Poids: 13oz/ft<sup>2</sup> | 4.000 gr/m<sup>2</sup>

Colours | Colores | Couleurs: 890-889-841

## Brazil

### HAND TUFTED 100 LINES



#### **BRA-1**

*Customizable*

Designer | Diseñador | Designer: Arik Levy.

70% wool + 30% bamboo | 70% lana + 30% bambú | 70% laine nz. + 30% bambou.

Size | Tamaño | Mesures: 6'x9'-8'x10'-9'x12' | 170x240 - 200x300 - 250x300

Height | Altura | Hauteur: 0,39in | 10mm

Weight | Peso | Poids: 13oz/ft<sup>2</sup> | 4.000 gr/m<sup>2</sup>

Colours | Colores | Couleurs: 890-18A

## Huelva

### HAND TUFTED 100 LINES



#### **HUE-1**

*Customizable*

Designer | Diseñador | Designer: Arik Levy.

50%+50% wool + bamboo silk | lana + bambú seda | laine nz. + bambou soie.

Size | Tamaño | Mesures: 6'x9'-8'x10'-9'x12' | 170x240 - 200x300 - 250x300

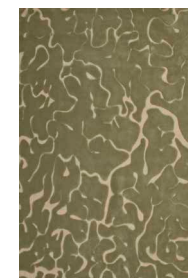
Height | Altura | Hauteur: 0,39in | 10mm

Weight | Peso | Poids: 13oz/ft<sup>2</sup> | 4.000 gr/m<sup>2</sup>

Colours | Colores | Couleurs: 869-02G

## Andalucia

### HAND TUFTED 100 LINES



#### **AND-1**

*Customizable*

Designer | Diseñador | Designer: Arik Levy.

75% lana + 25% bambú | 75% wool + 25% bamboo | 75% laine nz. + 25% bambou.

Size | Tamaño | Mesures: 6'x9'-8'x10'-9'x12' | 170x240 - 200x300 - 250x300

Height | Altura | Hauteur: 0,39in | 10mm

Weight | Peso | Poids: 13oz/ft<sup>2</sup> | 4.000 gr/m<sup>2</sup>

Colours | Colores | Couleurs: 869-02G



## Monegros

HAND TUFTED 100 LINES



### MON-1

Customizable

Designer | Diseñador | Designer: Arik Levy.

70% wool + 30% bamboo | 70% lana + 30% bambú | 70% laine nz. + 30% bambou.

Size | Tamaño | Mesures: 6'6"x9'8"-8'x10'-9'x12' | 170x240 - 200x300 - 250x300

Height | Altura | Hauteur: 0,39in | 10mm

Weight | Peso | Poids: 13oz/ft<sup>2</sup> | 4.000 gr/m<sup>2</sup>

Colours | Colores | Couleurs: 808-06A

## KO

HAND TUFTED 100 LINES



### KO-1

Customizable

Designer | Diseñador | Designer: Francesc Rifé.

100% bambú seda | 100% bamboo silk | 100% soie bambou.

Size | Tamaño | Mesures: 6'6"x9'8"-8'x10'-9'x12' | 200x300 - 250x300

Height | Altura | Hauteur: 0,39in | 10mm

Weight | Peso | Poids: 13oz/ft<sup>2</sup> | 4.000 gr/m<sup>2</sup>

Colours request | Colores a consultar | Couleurs demander.



### KO-2

Customizable

Designer | Diseñador | Designer: Francesc Rifé.

100% bambú seda | 100% bamboo silk | 100% soie bambou.

Size | Tamaño | Mesures: 6'6"x9'8"-8'x10'-9'x12' | 200x300 - 250x300

Height | Altura | Hauteur: 0,39in | 10mm

Weight | Peso | Poids: 13oz/ft<sup>2</sup> | 4.000 gr/m<sup>2</sup>

Colours request | Colores a consultar | Couleurs demander.

## KO

HAND TUFTED 100 LINES



### KO-3

Customizable

Designer | Diseñador | Designer: Francesc Rifé.

100% bambú seda | 100% bamboo silk | 100% soie bambou.

Size | Tamaño | Mesures: 6'6"x9'8"-8'x10'-9'x12' | 200x300 - 250x300

Height | Altura | Hauteur: 0,39in | 10mm

Weight | Peso | Poids: 13oz/ft<sup>2</sup> | 4.000 gr/m<sup>2</sup>

Colours request | Colores a consultar | Couleurs demander.



### HO-4

Customizable

Designer | Diseñador | Designer: Francesc Rifé.

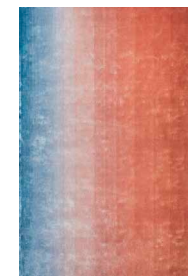
100% bambú seda | 100% bamboo silk | 100% soie bambou.

Size | Tamaño | Mesures: 6'6"x9'8"-8'x10'-9'x12' | 200x300 - 250x300

Height | Altura | Hauteur: 0,39in | 10mm

Weight | Peso | Poids: 13oz/ft<sup>2</sup> | 4.000 gr/m<sup>2</sup>

Colours request | Colores a consultar | Couleurs demander.



### KO-5

Customizable

Designer | Diseñador | Designer: Francesc Rifé.

100% bambú seda | 100% bamboo silk | 100% soie bambou.

Size | Tamaño | Mesures: 6'6"x9'8"-8'x10'-9'x12' | 200x300 - 250x300

Height | Altura | Hauteur: 0,39in | 10mm

Weight | Peso | Poids: 13oz/ft<sup>2</sup> | 4.000 gr/m<sup>2</sup>

Colours request | Colores a consultar | Couleurs demander.



## Kaila

HAND KNOTTED 100 LINE



**KL-01**

*Customizable*

Designer | Diseñador | Designer: Francesc Rifé.

50% lana + 50% bambú | 50% wool + 50% bamboo | 50% laine nz. + 50% bambou.

Size | Tamaño | Mesures: 5'6"x7'9"-6'6"x9'8"-8'x10'-9'x12' | 170x240 - 200x300 - 250x300

Height | Altura | Hauteur: 10mm | 0,39in

Weight | Peso | Poids: 13oz/ft<sup>2</sup> | 4.000 gr/m<sup>2</sup>

Colours | Colores | Couleurs: 825-910

## Miles

HAND KNOTTED 100 LINES



**ML-01**

*Customizable*

Designer | Diseñador | Designer: Moneo Brock.

80% lana + 20% bambú | 80% wool + 20% bamboo | 80% laine nz. + 20% bambou.

Size | Tamaño | Mesures: 5'6"x7'9"-6'6"x9'8"-8'x10'-9'x12' | 170x240-200x300-250x300

Height | Altura | Hauteur: 0,39in | 10mm

Weight | Peso | Poids: 13oz/ft<sup>2</sup> | 4.000 gr/m<sup>2</sup>

Colours | Colores | Couleurs: 989-995-909-15J-11A-14J-11P-11B-09K

## Sharad

HAND KNOTTED



**SHA -01**

*Customizable*

Designer | Diseñador | Designer: My NOW.

Nz. wool + bamboo silk | Lana de Nz. + seda de bambú | Laine Nz. + soie bambou.

Size | Tamaño | Mesures: 5'6"x7'9"-6'6"x9'8"-8'x10'-9'x12' | 170x240-200x300-250x300

Height | Altura | Hauteur: 0,39in | 10mm

Weight | Peso | Poids: 13oz/ft<sup>2</sup> | 4.000 gr/m<sup>2</sup>

Colours | Colores | Couleurs: Request - Consultar - Demande.

## Ego

HAND TUFTED



**EG-01**

*Customizable*

Designer | Diseñador | Designer: Francesc Rifé.

100% wool | 100% lana | 100% laine nz.

Size | Tamaño | Mesures: 7'9"x 9'2" | 240x280

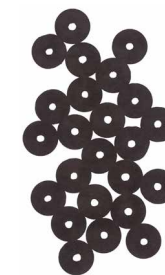
Height | Altura | Hauteur: 0,66in | 17mm

Weight | Peso | Poids: 14oz/ft<sup>2</sup> | 4.250 gr/m<sup>2</sup>

Colours | Colores | Couleurs: 842-981

## Funghi

HAND TUFTED



**FG-1**

*Customizable*

Designer | Diseñador | Designer: Francesc Rifé.

100% wool | 100% lana | 100% laine nz.

Size | Tamaño | Mesures: 2'3"x4'6"-5'6"x7'9"-6'6"x9'8"-8'x10' | 70x140-170x240-200x300

Height | Altura | Hauteur: 0,7in | 18mm

Weight | Peso | Poids: 14oz/ft<sup>2</sup> | 4.250 gr/m<sup>2</sup>

Colours | Colores | Couleurs: 826

## Leaf

HAND TUFTED



**LF-3**

*Customizable*

Designer | Diseñador | Designer: Francesc Rifé.

100% wool | 100% lana | 100% laine nz.

Size | Tamaño | Mesures: 5'x6'6"-5'6"x7'9"-5'6"x5'6"-6'6"x9'8" | 150x200-170x240-170x170-200x300

Height | Altura | Hauteur: 0,66in | 17mm

Weight | Peso | Poids: 14oz/ft<sup>2</sup> | 4.250 gr/m<sup>2</sup>

Colours | Colores | Couleurs: 911



## Leaf Rounded

HAND TUFTED



**LF-01**

*Customizable*

Designer | Diseñador | Designer: Francesc Rifé.  
100% wool | 100% lana | 100% laine nz.  
Size | Tamaño | Mesures: Ø6'6" | Ø 200  
Height | Altura | Hauteur: 0,66in | 17mm  
Weight | Peso | Poids: 14oz/ft<sup>2</sup> | 4.250 gr/m<sup>2</sup>  
Colours | Colores | Couleurs: 822

## Ona

HAND TUFTED



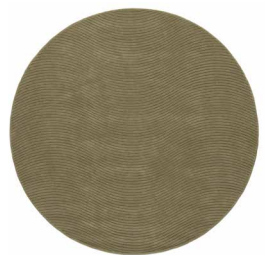
**ON-01**

*Customizable*

Designer | Diseñador | Designer: Francesc Rifé.  
100% wool | 100% lana | 100% laine nz.  
Size | Tamaño | Mesures: 5'x6'6"-5'6"x7'9"-5'6"x5'6"-6'6"x9'8" | 150x200-170x240-170x170-200x300  
Height | Altura | Hauteur: 0,66in | 17mm  
Weight | Peso | Poids: 14oz/ft<sup>2</sup> | 4.250 gr/m<sup>2</sup>  
Colours | Colores | Couleurs: 931

## Ona Rounded

HAND TUFTED



**ON-05**

*Customizable*

Designer | Diseñador | Designer: Francesc Rifé.  
100% wool | 100% lana | 100% laine nz.  
Size | Tamaño | Mesures: Ø5'-Ø6'6" | Ø150-Ø200  
Height | Altura | Hauteur: 0,66in | 17mm  
Weight | Peso | Poids: 14oz/ft<sup>2</sup> | 4.250 gr/m<sup>2</sup>  
Colours | Colores | Couleurs: 869

## Ring

HAND TUFTED



**RG-01**

*Customizable*

Designer | Diseñador | Designer: Francesc Rifé.  
100% wool | 100% lana | 100% laine nz.  
Size | Tamaño | Mesures: Ø8'2" | Ø250  
Height | Altura | Hauteur: 0,66in | 17mm  
Weight | Peso | Poids: 14oz/ft<sup>2</sup> | 4.250 gr/m<sup>2</sup>  
Colours | Colores | Couleurs: 910-989

## Sea Sea

HAND TUFTED



**SA-1**

*Customizable*

Designer | Diseñador | Designer: Christian Ghion.  
75% wool + 25% viscose | 75% lana + 25% viscosa | 75% laine nz. + 25% viscose.  
Size | Tamaño | Mesures: 5'6"x7'9"-6'6"x9'8"-7'9"x7'9"-8'10" | 170x240-200x300-240x240  
Height | Altura | Hauteur: 0,66in | 17mm  
Weight | Peso | Poids: 14oz/ft<sup>2</sup> | 4.250 gr/m<sup>2</sup>  
Colours | Colores | Couleurs: 8955-949-995

## Lucky you

HAND TUFTED 100 LINES



**LUK-1**

*Customizable*

Designer | Diseñador | Designer: Anna Muravina.  
Bamboo silk | Bambú seda | Soie bambou.  
Size | Tamaño | Mesures: 8'x10' | 200x300  
Height | Altura | Hauteur: 0,42in | 12mm  
Weight | Peso | Poids: 16,35oz/ft<sup>2</sup> | 5.000 gr/m<sup>2</sup>  
Colours | Colores | Couleurs: 25



## Kids of the ocean

HAND TUFTED 100 LINES



**KID-1**

*Customizable*

Designer | Diseñador | Designer: Anna Muravina.  
Bamboo silk | Bambú seda | Soie bambou.  
Size | Tamaño | Mesures: 6'6"x9'8"-8'x10' | 200x300-250x300  
Height | Altura | Hauteur: 0,39in | 10mm  
Weight | Peso | Poids: 13oz/ft<sup>2</sup> | 4.000 gr/m<sup>2</sup>  
Colours request | Colores a consultar | Couleurs demander.

## Masha

HAND TUFTED 100 LINES



**MAH-1**

*Customizable*

Designer | Diseñador | Designer: Anna Muravina.  
Bamboo silk | Bambú seda | Soie bambou.  
Size | Tamaño | Mesures: 8'x10' | 250x300  
Height | Altura | Hauteur: 0,39in | 10mm  
Weight | Peso | Poids: 13oz/ft<sup>2</sup> | 4.000 gr/m<sup>2</sup>  
Colours | Colores | Couleurs: 22

## Grisha

HAND TUFTED 100 LINES



**GRI-1**

*Customizable*

Designer | Diseñador | Designer: Anna Muravina.  
Bamboo silk | Bambú seda | Soie bambou.  
Size | Tamaño | Mesures: 8'x10' | 250x300  
Height | Altura | Hauteur: 0,39in | 10mm  
Weight | Peso | Poids: 13oz/ft<sup>2</sup> | 4.000 gr/m<sup>2</sup>  
Colours | Colores | Couleurs: 871-894-931-979-980-981

## Vera

HAND TUFTED 100 LINES



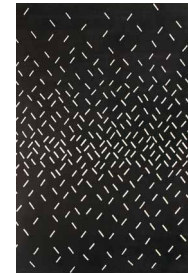
**VER-2**

*Customizable*

Designer | Diseñador | Designer: Anna Muravina.  
Bamboo silk | Bambú seda | Soie bambou.  
Size | Tamaño | Mesures: 8'x10'4" | 245x315  
Height | Altura | Hauteur: 0,39in | 10mm  
Weight | Peso | Poids: 13oz/ft<sup>2</sup> | 4.000 gr/m<sup>2</sup>  
Colours | Colores | Couleurs: 891-920-951-959-1000-01C

## Language

HAND TUFTED



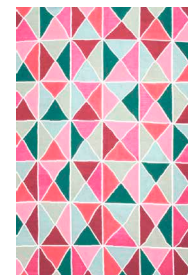
**LG-01**

*Customizable*

Designer | Diseñador | Designer: Stephanie Goto.  
75% wool + 25% viscose | 75% lana + 25% viscosa | 75% laine nz. + 25% viscose.  
Size | Tamaño | Mesures: 6'2"x8'2"-9'x12' | 190x250 - 270x365  
Height | Altura | Hauteur: 0,66in | 17mm  
Weight | Peso | Poids: 14oz/ft<sup>2</sup> | 4.250 gr/m<sup>2</sup>  
Colours | Colores | Couleurs: 8955-949-995

## Triangulos

HAND MADE KILIM



**TRIANGULOS**

*Customizable*

Designer | Diseñador | Designer: Inma Bermúdez  
Recycled polyester | Poliéster reciclado | Polyester recyclé.  
Size | Tamaño | Mesures: 6'x9'-8'x10'-9'x12' | 170x240-200x300-250x300  
Height | Altura | Hauteur: 0,23in | 6mm  
Weight | Peso | Poids: 6oz/ft<sup>2</sup> | 2.000 gr/m<sup>2</sup>  
Colours | Colores | Couleurs: NC-001-NC-017-NC-020-NC-057-NC-173-NC-302-NC-350-NC-402



## Mosaic

HAND MADE KILIM



### MOSAIC

Customizable

Designer | Diseñador | Designer: Inma Bermúdez

Recycled polyester | Poliéster reciclado | Polyester recyclé.

Size | Tamaño | Mesures: 6'x9'-8'x10'-9'x12' | 170x240-200x300-250x300

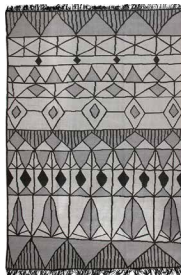
Height | Altura | Hauteur: 0,23in | 6mm

Weight | Peso | Poids: 6oz/ft<sup>2</sup> | 2.000 gr/m<sup>2</sup>

Colours | Colores | Couleurs: NC-001-NC-009-NC-211-NC-306-NC-397-NC-410-NC-470

## Etnica

HAND MADE KILIM



### ETNICA

Customizable

Designer | Diseñador | Designer: Inma Bermúdez

Recycled polyester | Poliéster reciclado | Polyester recyclé.

Size | Tamaño | Mesures: 6'x9'-8'x10'-9'x12' | 170x240-200x300-250x300

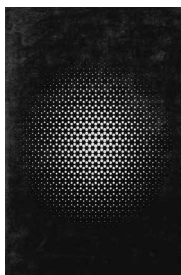
Height | Altura | Hauteur: 0,23in | 6mm

Weight | Peso | Poids: 6oz/ft<sup>2</sup> | 2.000 gr/m<sup>2</sup>

Colours | Colores | Couleurs:

## AKARI

HAND KNOTTED 100 LINES



### AK-01

Customizable

Designer | Diseñador | Designer: Yumi Endo.

80% wool + 20% viscose | 80% lana + 20% viscosa | 80% laine nz. + 20% viscose.

Size | Tamaño | Mesures: 5'6"x7'9"-6'6"x9'8"-7'9"x7'9"-8'10" | 170x240 - 200x300

Height | Altura | Hauteur: 0,39in | 10mm

Weight | Peso | Poids: 13oz/ft<sup>2</sup> | 4.000 gr/m<sup>2</sup>

Colours | Colores | Couleurs: 812-961

## Akari Rounded

HAND KNOTTED 100 LINES



### AKR-1

Customizable

Designer | Diseñador | Designer: Yumi Endo.

80% wool + 20% viscose | 80% lana + 20% viscosa | 80% laine nz. + 20% viscose.

Size | Tamaño | Mesures: Ø10' | Ø200

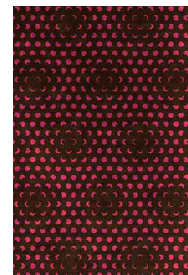
Height | Altura | Hauteur: 0,39in | 10mm

Weight | Peso | Poids: 13oz/ft<sup>2</sup> | 4.000 gr/m<sup>2</sup>

Colours | Colores | Couleurs: 812-961

## Botan

HAND KNOTTED 100 LINES



### BT-01

Customizable

Designer | Diseñador | Designer: Yumi Endo.

70% lana + 30% viscosa | 70% wool + 30% viscose | 70% laine nz. + 30% viscose.

Size | Tamaño | Mesures: 5'6"x7'9"-6'6"x9'8"-8'x10'-9'x12' | 170x240 - 200x300

Height | Altura | Hauteur: 0,39in | 10mm

Weight | Peso | Poids: 13oz/ft<sup>2</sup> | 4.000 gr/m<sup>2</sup>

Colours | Colores | Couleurs: 824-957

## Corso

HAND KNOTTED 100 LINES



### CR-01

Customizable

Designer | Diseñador | Designer: Jose Albors.

100% wool | 100% lana | 100% laine nz.

Size | Tamaño | Mesures: 5'6"x7'9"-6'6"x9'8"-8'x10' | 170x240-200x300-250x300

Height | Altura | Hauteur: 0,39in | 10mm

Weight | Peso | Poids: 13oz/ft<sup>2</sup> | 4.000 gr/m<sup>2</sup>

Colours | Colores | Couleurs: 981-845



## Iceberg

HAND KNOTTED 100 LINES



**IC-01**

*Customizable*

Designer | Diseñador | Designer: Jose Albors.

70% wool + 30% bamboo | 70% lana + 30% bambú | 70% laine nz. + 30% bambou.

Size | Tamaño | Mesures: 5'6"x7'9"-6'6"x9'8"-8'x10'-9'x12' | 170x240-200x300-250x300

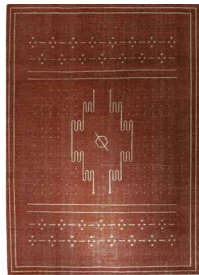
Height | Altura | Hauteur: 0,39in | 10mm

Weight | Peso | Poids: 13oz/ft<sup>2</sup> | 4.000 gr/m<sup>2</sup>

Colours | Colores | Couleurs: 981-853-955-991-899-940-987

## Connection

HAND KNOTTED 80 LINES



**CNN-01**

*Customizable*

Designer | Diseñador | Designer: Jose Albors.

80% wool + 20% bamboo | 80% lana + 20% bambú | 80% laine nz. + 20% bambou.

Size | Tamaño | Mesures: 5'6"x7'9"-6'6"x9'8"-8'x10'-9'x12' | 170x240-200x300-250x300

Height | Altura | Hauteur: 0,39in | 10mm

Weight | Peso | Poids: 12oz/ft<sup>2</sup> | 3.750 gr/m<sup>2</sup>

Colours | Colores | Couleurs: 871-01A

## Sabbia

HAND KNOTTED 100 LINES



**SB-01**

*Customizable*

Designer | Diseñador | Designer: Jose Albors.

100% wool | 100% lana | 100% laine nz.

Size | Tamaño | Mesures: 5'6"x7'9"-6'6"x9'8"-8'x10'-9'x12' | 170x240-200x300-250x300

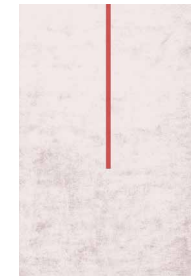
Height | Altura | Hauteur: 0,39in | 10mm

Weight | Peso | Poids: 13oz/ft<sup>2</sup> | 4.000 gr/m<sup>2</sup>

Colours | Colores | Couleurs: 801-845

## Fiumi bamboo

HAND KNOTTED 100 LINES



**FU-14-1**

*Customizable*

Designer | Diseñador | Designer: Jose Albors.

100% bamboo silk hand-spun | 100% bambú seda hand-spun | 100% soie bambou hand-spun

Size | Tamaño | Mesures: 5'6"x7'9"-6'6"x9'8"-8'x10'-9'x12' | 170x240-200x300-250x300

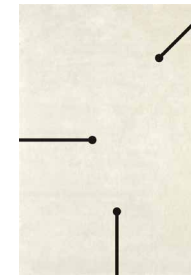
Height | Altura | Hauteur: 0,47in | 12mm

Weight | Peso | Poids: 15oz/ft<sup>2</sup> | 4.500 gr/m<sup>2</sup>

Colours | Colores | Couleurs: 13P-12i

## Fiumi

HAND TUFTED



**FU-01**

*Customizable*

Designer | Diseñador | Designer: Jose Albors.

100% wool | 100% lana | 100% laine nz.

Size | Tamaño | Mesures: 5'6"x7'9"-6'6"x9'8"-8'x10'-9'x12' | 170x240-200x300-250x300

Height | Altura | Hauteur: 0,66in | 17mm

Weight | Peso | Poids: 14oz/ft<sup>2</sup> | 4.250 gr/m<sup>2</sup>

Colours | Colores | Couleurs: 812-961

## Mire

HAND TUFTED



**MR-01**

*Customizable*

Designer | Diseñador | Designer: Jose Albors.

100% wool | 100% lana | 100% laine nz.

Size | Tamaño | Mesures: 5'x7'8" | 150x240

Height | Altura | Hauteur: 0,78in | 20mm

Weight | Peso | Poids: 16oz/ft<sup>2</sup> | 4.750 gr/m<sup>2</sup>

Colours | Colores | Couleurs:



## Skull

HAND TUFTED



**LL-01**

*Customizable*

Designer | Diseñador | Designer: Claudio Colucci.  
 100% wool | 100% lana | 100% laine nz.  
 Size | Tamaño | Mesures: 6'6"x9'8" | 200x300  
 Height | Altura | Hauteur: 0,66in | 17mm  
 Weight | Peso | Poids: 14oz/ft<sup>2</sup> | 4.250 gr/m<sup>2</sup>  
 Colours request | Colores a consultar | Couleurs demander

## Skyscraper

HAND TUFTED



**SS-01**

*Customizable*

Designer | Diseñador | Designer: Claudio Colucci.  
 100% wool | 100% lana | 100% laine nz.  
 Size | Tamaño | Mesures: 6'6"x9'8" | 200x300  
 Height | Altura | Hauteur: 0,66in | 17mm  
 Weight | Peso | Poids: 14oz/ft<sup>2</sup> | 4.250 gr/m<sup>2</sup>  
 Colours request | Colores a consultar | Couleurs demander

## Squeeze 1

HAND TUFTED



**SQ-01**

*Customizable*

Designer | Diseñador | Designer: Claudio Colucci.  
 100% wool | 100% lana | 100% laine nz.  
 Size | Tamaño | Mesures: 5'6"x7'9"-6'6"x9'8"-8'x10' | 170x240-200x300  
 Height | Altura | Hauteur: 0,66in | 17mm  
 Weight | Peso | Poids: 14oz/ft<sup>2</sup> | 4.250 gr/m<sup>2</sup>  
 Colours | Colores | Couleurs: 929-909-989-889 975-949-870-910 890-833-825-805-812

## Squeeze 2

HAND TUFTED



**SQ-02**

*Customizable*

Designer | Diseñador | Designer: Claudio Colucci.  
 100% wool | 100% lana | 100% laine nz.  
 Size | Tamaño | Mesures: 5'6"x7'9"-6'6"x9'8"-8'x10' | 170x240-200x300  
 Height | Altura | Hauteur: 0,66in | 17mm  
 Weight | Peso | Poids: 14oz/ft<sup>2</sup> | 4.250 gr/m<sup>2</sup>  
 Colours | Colores | Couleurs: 833-910-870 949-889-909

## Squeeze 3

HAND TUFTED



**SQ-03**

*Customizable*

Designer | Diseñador | Designer: Claudio Colucci.  
 100% wool | 100% lana | 100% laine nz.  
 Size | Tamaño | Mesures: 5'6"x7'9"-6'6"x9'8"-8'x10' | 170x240-200x300  
 Height | Altura | Hauteur: 0,66in | 17mm  
 Weight | Peso | Poids: 14oz/ft<sup>2</sup> | 4.250 gr/m<sup>2</sup>  
 Colours | Colores | Couleurs: 833-910-870 949-889-909

## Squeeze

HAND TUFTED



**SQ-10**

*Customizable*

Designer | Diseñador | Designer: Claudio Colucci.  
 100% wool | 100% lana | 100% laine nz.  
 Size | Tamaño | Mesures: 5'6"x7'9"-6'6"x9'8"-8'x10' | 170x240-200x300  
 Height | Altura | Hauteur: 0,66in | 17mm  
 Weight | Peso | Poids: 14oz/ft<sup>2</sup> | 4.250 gr/m<sup>2</sup>  
 Colours | Colores | Couleurs: 910



## Filaments

HAND TUFTED



### FT-01

Customizable

Designer | Diseñador | Designer: Michael Banks.  
 75% wool + 25% viscose | 75% lana + 25% viscosa | 75% laine nz. + 25% viscose.  
 Size | Tamaño | Mesures: 5'6"x7'9"-6'6"x9'8"-8'x10' | 170x240-200x300  
 Height | Altura | Hauteur: 0,66in | 17mm  
 Weight | Peso | Poids: 14oz/ft<sup>2</sup> | 4.250 gr/m<sup>2</sup>  
 Colours | Colores | Couleurs: 902-822-825

## Cha-Cha 01

HAND TUFTED



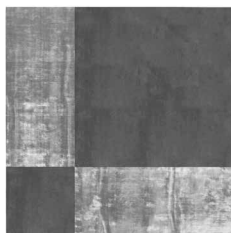
### CHA-01

Customizable

Designer | Diseñador | Designer: Andreas Charalambous.  
 Nz. wool + bamboo | lana de Nz. + bambú | laine Nz. + bambou.  
 Size | Tamaño | Mesures: 8'x8'- 9'x9'- 10'x10' | 200x200- 250x250 - 300x300  
 Height | Altura | Hauteur: 0,39in | 10mm  
 Weight | Peso | Poids: 13oz/ft<sup>2</sup> | 4.000 gr/m<sup>2</sup>  
 Colours | Colores | Couleurs: 961-115

## Cha-Cha 02

HAND TUFTED



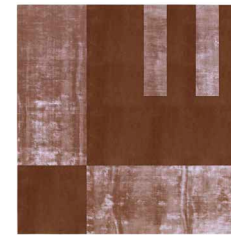
### CHA-02

Customizable

Designer | Diseñador | Designer: Andreas Charalambous.  
 Nz. wool + bamboo | lana de Nz. + bambú | laine Nz. + bambou.  
 Size | Tamaño | Mesures: 8'x8'- 9'x9'- 10'x10' | 200x200- 250x250 - 300x300  
 Height | Altura | Hauteur: 0,39in | 10mm  
 Weight | Peso | Poids: 13oz/ft<sup>2</sup> | 4.000 gr/m<sup>2</sup>  
 Colours | Colores | Couleurs: 961-115

## Cha-Cha 03

HAND TUFTED



### CHA-03

Customizable

Designer | Diseñador | Designer: Andreas Charalambous.  
 Nz. wool + bamboo | lana de Nz. + bambú | laine Nz. + bambou.  
 Size | Tamaño | Mesures: 8'x8'- 9'x9'- 10'x10' | 200x200- 250x250 - 300x300  
 Height | Altura | Hauteur: 0,39in | 10mm  
 Weight | Peso | Poids: 13oz/ft<sup>2</sup> | 4.000 gr/m<sup>2</sup>  
 Colours | Colores | Couleurs: 961-115

## Cha-Cha 04

HAND TUFTED



### CHA-04

Designer | Diseñador | Designer: Andreas Charalambous.  
 Nz. wool + bamboo | lana de Nz. + bambú | laine Nz. + bambou.  
 Size | Tamaño | Mesures: 8'x8'- 9'x9'- 10'x10' | 200x200- 250x250 - 300x300  
 Height | Altura | Hauteur: 0,39in | 10mm  
 Weight | Peso | Poids: 13oz/ft<sup>2</sup> | 4.000 gr/m<sup>2</sup>  
 Colours | Colores | Couleurs: 961-115

## Basic bamboo silk

HAND KNOTT



### TAN-01

Customizable

Designer | Diseñador | Designer: My Now  
 80%+20% wool+cotton | 80%+20% lana+algodón | 80%+20% laine+coton.  
 Size | Tamaño | Mesures: 5'6"x7'9"-6'6"x9'8"-8'x10' | 170x240-200x300  
 Height | Altura | Hauteur: 1,39in | 10mm  
 Weight | Peso | Poids: 13oz/ft<sup>2</sup> | 4.000 gr/m<sup>2</sup>  
 Colours | Colores | Couleurs: Grey HSW15  
 Tratamiento scotchguard™ | Treatment scotchguard™ | Traitement scotchguard™



## Tanger

### HAND SPUN 100 LINES



#### TAN-01

Customizable

Designer | Diseñador | Designer: My Now  
 80%+20% wool+cotton | 80%+20% lana+algodón | 80%+20% laine+coton.  
 Size | Tamaño | Mesures: 5'6"x7'9"-6'6"x9'8"-8'x10' | 170x240-200x300  
 Height | Altura | Hauteur: 1,56in | 40mm  
 Weight | Peso | Poids: 14oz/ft<sup>2</sup> | 4.250 gr/m<sup>2</sup>  
 Colours | Colores | Couleurs: Grey HSW15



#### TAN-02

Customizable

Designer | Diseñador | Designer: My Now  
 80%+20% wool+cotton | 80%+20% lana+algodón | 80%+20% laine+coton.  
 Size | Tamaño | Mesures: 5'6"x7'9"-6'6"x9'8"-8'x10' | 170x240-200x300  
 Height | Altura | Hauteur: 1,56in | 40mm  
 Weight | Peso | Poids: 14oz/ft<sup>2</sup> | 4.250 gr/m<sup>2</sup>  
 Colours | Colores | Couleurs: Brown MO5



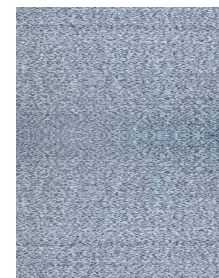
#### TAN-03

Customizable

Designer | Diseñador | Designer: My Now  
 80%+20% wool+cotton | 80%+20% lana+algodón | 80%+20% laine+coton.  
 Size | Tamaño | Mesures: 5'6"x7'9"-6'6"x9'8"-8'x10' | 170x240-200x300  
 Height | Altura | Hauteur: 1,56in | 40mm  
 Weight | Peso | Poids: 14oz/ft<sup>2</sup> | 4.250 gr/m<sup>2</sup>  
 Colours | Colores | Couleurs: Natural HSW25

## Gobi

### LOOM-KNOTTED DOUBLE BACK



#### GOB-01

Customizable

Designer | Diseñador | Designer: MY NOW.  
 80%+20% mix lana&tencel+algodón | mix wool&tencel+cotton | mix laine&tencel+coton.  
 Size | Tamaño | Mesures: 5'6"x7'9"-6'6"x9'8"-8'x10' | 170x240-200x300-250x300  
 Height | Altura | Hauteur: 0,46in | 12mm  
 Weight | Peso | Poids: 13oz/ft<sup>2</sup> | 4.000 gr/m<sup>2</sup>  
 Colours | Colores | Couleurs: Silver

## Dune In & Outdoor

### LOOM-KNOTTED DOUBLE BACK



#### DUN -4/312

Customizable

Designer | Diseñador | Designer: Vicente Vidal.  
 100% wool | 100% lana | 100% laine nz.  
 Size | Tamaño | Mesures: 5'6"x7'9"-6'6"x9'8"-8'x10' | 150x200-170x240-200x300  
 Height | Altura | Hauteur: 0,66in | 17mm  
 Weight | Peso | Poids: 14oz/ft<sup>2</sup> | 4.250 gr/m<sup>2</sup>  
 Colours | Colores | Couleurs: Blue

## Onn

### LOOM-KNOTTED DOUBLE BACK



#### ONN-01

Customizable

Designer | Diseñador | Designer: Vicente Vidal.  
 50%+50% bambú seda+lana natural | bamboo silk+natural wool | soie bambou+laine naturelle.  
 Size | Tamaño | Mesures: 5'6"x7'9"-6'6"x9'8"-8'x10' | 150x200-170x240-200x300  
 Height | Altura | Hauteur: 0,31in | 8mm  
 Weight | Peso | Poids: 11oz/ft<sup>2</sup> | 3.250 gr/m<sup>2</sup>  
 Colours | Colores | Couleurs: 20A-19C



# IN & OUTDOOR



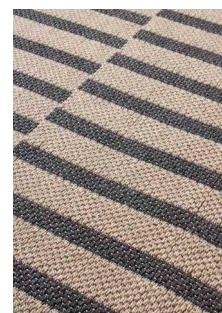
## Palma



### **POL-04**

*Customizable*

Designer | Diseñador | Designer: Romero y Vallejo  
 Polypropylene | Polipropileno | Polypropilène  
 Size | Tamaño | Mesures: 6'x9'-8'x10'-9'x12' | 200x300-250x300-275x365  
 Height | Altura | Hauteur: 0,41 in | 10,55 mm  
 Weight | Peso | Poids: 9,18 oz/ft<sup>2</sup> | 2.800 gr/m<sup>2</sup>  
 Colours | Colores | Couleurs: 35 & 20  
 Max. wide | Anchura máx. | Largueur: 27' | 8 m



### **PL-02**

*Customizable*

Designer | Diseñador | Designer: Romero y Vallejo  
 Polypropylene | Polipropileno | Polypropilène  
 Size | Tamaño | Mesures: 6'x9'-8'x10'-9'x12' | 200x300-250x300-275x365  
 Height | Altura | Hauteur: 0,41 in | 10,55 mm  
 Weight | Peso | Poids: 8,52 oz/ft<sup>2</sup> | 2.600 gr/m<sup>2</sup>  
 Colours | Colores | Couleurs: 13 & 68  
 Max. wide | Anchura máx. | Largueur: 18' | 5,5 m



### **PL-03**

*Customizable*

Designer | Diseñador | Designer: My Now  
 Polypropylene | Polipropileno | Polypropilène  
 Size | Tamaño | Mesures: 6'x9'-8'x10'-9'x12' | 200x300-250x300-275x365  
 Height | Altura | Hauteur: 0,33 in | 8,5 mm  
 Weight | Peso | Poids: 5,9 oz/ft<sup>2</sup> | 1.800 gr/m<sup>2</sup>  
 Colours | Colores | Couleurs: 9, 14 & 16  
 Max. wide | Anchura máx. | Largueur: 27' | 8 m



## Palma



### **POL-04**

*Customizable*

Designer | Diseñador | Designer: My Now  
 Polypropylene | Polipropileno | Polypropilène  
 Size | Tamaño | Mesures: 6'x9'-8'x10'-9'x12' | 200x300-250x300-275x365  
 Height | Altura | Hauteur: 0,35 in | 9 mm  
 Weight | Peso | Poids: 7,4 oz/ft<sup>2</sup> | 2.300 gr/m<sup>2</sup>  
 Colours | Colores | Couleurs: 13, 16, 21 & 27  
 Max. wide | Anchura máx. | Largeur: 18' | 5,5 m

## Palma



### **POL-07**

*Customizable*

Designer | Diseñador | Designer: My Now  
 Polypropylene | Polipropileno | Polypropilène  
 Size | Tamaño | Mesures: 6'x9'-8'x10'-9'x12' | 200x300-250x300-275x365  
 Height | Altura | Hauteur: 0,47 in | 12 mm  
 Weight | Peso | Poids: 11,8 oz/ft<sup>2</sup> | 3.600 gr/m<sup>2</sup>  
 Colours | Colores | Couleurs: 41  
 Max. wide | Anchura máx. | Largeur: 13' | 4 m



### **PL-05**

*Customizable*

Designer | Diseñador | Designer: My Now  
 Polypropylene | Polipropileno | Polypropilène  
 Size | Tamaño | Mesures: 6'x9'-8'x10'-9'x12' | 200x300-250x300-275x365  
 Height | Altura | Hauteur: 0,24 in | 6 mm  
 Weight | Peso | Poids: 4,92 oz/ft<sup>2</sup> | 1.500 gr/m<sup>2</sup>  
 Colours | Colores | Couleurs: 2, 8, 9, 13, 16 & 39  
 Max. wide | Anchura máx. | Largeur: 27' | 8 m



### **PL-08**

*Customizable*

Designer | Diseñador | Designer: My Now  
 Polypropylene | Polipropileno | Polypropilène  
 Size | Tamaño | Mesures: 6'x9'-8'x10'-9'x12' | 200x300-250x300-275x365  
 Height | Altura | Hauteur: 0,47 in | 12 mm  
 Weight | Peso | Poids: 12,79 oz/ft<sup>2</sup> | 3.900 gr/m<sup>2</sup>  
 Colours | Colores | Couleurs: 23 & 33  
 Max. wide | Anchura máx. | Largeur: 13' | 4 m



### **PL-06**

*Customizable*

Designer | Diseñador | Designer: My Now  
 Polypropylene | Polipropileno | Polypropilène  
 Size | Tamaño | Mesures: 6'x9'-8'x10'-9'x12' | 200x300-250x300-275x365  
 Height | Altura | Hauteur: 0,37 in | 9,5 mm  
 Weight | Peso | Poids: 9,83 oz/ft<sup>2</sup> | 3.000 gr/m<sup>2</sup>  
 Colours | Colores | Couleurs: 8 & 55  
 Max. wide | Anchura máx. | Largeur: 13' | 4 m



### **PL-09**

*Customizable*

Designer | Diseñador | Designer: My Now  
 Polypropylene | Polipropileno | Polypropilène  
 Size | Tamaño | Mesures: 6'x9'-8'x10'-9'x12' | 200x300-250x300-275x365  
 Height | Altura | Hauteur: 0,63 in | 16 mm  
 Weight | Peso | Poids: 10,16 oz/ft<sup>2</sup> | 3.100 gr/m<sup>2</sup>  
 Colours | Colores | Couleurs: 22 & 27  
 Max. wide | Anchura máx. | Largeur: 13' | 4 m



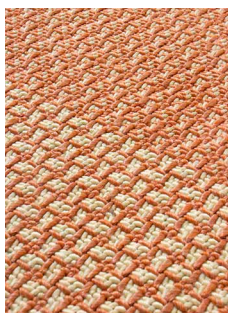
## Palma



### **POL-10**

*Customizable*

Designer | Diseñador | Designer: My Now  
 Polypropylene | Polipropileno | Polypropilène  
 Size | Tamaño | Mesures: 6'x9'-8'x10'-9'x12' | 200x300-250x300-275x365  
 Height | Altura | Hauteur: 0,35 in | 9 mm  
 Weight | Peso | Poids: 7,4 oz/ft<sup>2</sup> | 2.300 gr/m<sup>2</sup>  
 Colours | Colores | Couleurs: 16 & 75  
 Max. wide | Anchura máx. | Largeur: 27' | 8 m



### **PL-11**

*Customizable*

Designer | Diseñador | Designer: My Now  
 Polypropylene | Polipropileno | Polypropilène  
 Size | Tamaño | Mesures: 6'x9'-8'x10'-9'x12' | 200x300-250x300-275x365  
 Height | Altura | Hauteur: 0,24 in | 6 mm  
 Weight | Peso | Poids: 4,92 oz/ft<sup>2</sup> | 1.500 gr/m<sup>2</sup>  
 Colours | Colores | Couleurs: 5, & 35  
 Max. wide | Anchura máx. | Largeur: 18' | 5,5 m



### **PL-12**

*Customizable*

Designer | Diseñador | Designer: My Now  
 Polypropylene | Polipropileno | Polypropilène  
 Size | Tamaño | Mesures: 6'x9'-8'x10'-9'x12' | 200x300-250x300-275x365  
 Height | Altura | Hauteur: 0,37 in | 9,5 mm  
 Weight | Peso | Poids: 9,83 oz/ft<sup>2</sup> | 3.000 gr/m<sup>2</sup>  
 Colours | Colores | Couleurs: 9 & 37  
 Max. wide | Anchura máx. | Largeur: 27' | 8 m

## Palma Rounded



### **PLR-01**

*Customizable*

Designer | Diseñador | Designer: Romero y Vallejo  
 Polypropylene | Polipropileno | Polypropilène  
 Size | Tamaño | Mesures: 6'x9'-8'x10'-9'x12' | 200x300-250x300-275x365  
 Height | Altura | Hauteur: 0,35 in | 9 mm  
 Weight | Peso | Poids: 7,54 oz/ft<sup>2</sup> | 2.300 gr/m<sup>2</sup>  
 Colours | Colores | Couleurs: 23, 27, & 41  
 Max. wide | Anchura máx. | Largeur: 3' | 9 m



### **PLR-02**

*Customizable*

Designer | Diseñador | Designer: Romero y Vallejo  
 Polypropylene | Polipropileno | Polypropilène  
 Size | Tamaño | Mesures: 6'x9'-8'x10'-9'x12' | 200x300-250x300-275x365  
 Height | Altura | Hauteur: 0,35 in | 9 mm  
 Weight | Peso | Poids: 7,54 oz/ft<sup>2</sup> | 2.300 gr/m<sup>2</sup>  
 Colours | Colores | Couleurs: 36, 27, & 41  
 Max. wide | Anchura máx. | Largeur: 3' | 9 m

## Miami

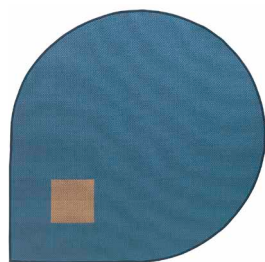


### **MI-01**

Designer | Diseñador | Designer: Romero y Vallejo  
 Polypropylene | Polipropileno | Polypropilène  
 Size | Tamaño | Mesures: 6'x9'-8'x10'-9'x12' | 200x300-250x300-275x365  
 Height | Altura | Hauteur: 0,31 in | 7,88 mm  
 Weight | Peso | Poids: 10 oz/ft<sup>2</sup> | 2.900 gr/m<sup>2</sup>  
 Colours | Colores | Couleurs: 28  
 Max. wide | Anchura máx. | Largeur: 27' | 8 m



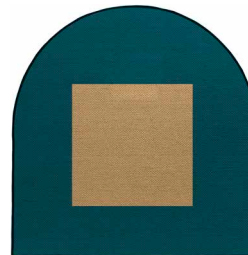
## Tangram



### Tear

*Customizable*

Designer | Diseñador | Designer: Nonna Design  
 Polypropylene | Polipropileno | Polypropilène  
 Size | Tamaño | Mesures: 6'x9'-8'x10'-9'x12' | 200x300-250x300-275x365  
 Height | Altura | Hauteur: 0,5 in | 13 mm  
 Weight | Peso | Poids: 10 oz/ft<sup>2</sup> | 2.900 gr/m<sup>2</sup>  
 Colours | Colores | Couleurs: 8, 41 & 42  
 Max. wide | Anchura máx. | Largueur: 18' | 5,5 m

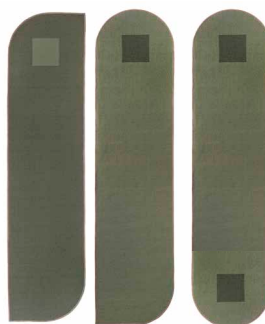


### Half moon

*Customizable*

Designer | Diseñador | Designer: Nonna Design  
 Polypropylene | Polipropileno | Polypropilène  
 Size | Tamaño | Mesures: 6'x9'-8'x10'-9'x12' | 200x300-250x300-275x365  
 Height | Altura | Hauteur: 0,5 in | 13 mm  
 Weight | Peso | Poids: 10 oz/ft<sup>2</sup> | 2.900 gr/m<sup>2</sup>  
 Colours | Colores | Couleurs: 8 & 76  
 Max. wide | Anchura máx. | Largueur: 18' | 5,5 m

## Maui



### Line

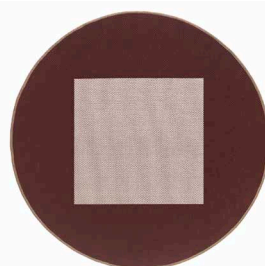
*Customizable*

Designer | Diseñador | Designer: Nonna Design  
 Polypropylene | Polipropileno | Polypropilène  
 Size | Tamaño | Mesures: 6'x9'-8'x10'-9'x12' | 200x300-250x300-275x365  
 Height | Altura | Hauteur: 0,5 in | 13 mm  
 Weight | Peso | Poids: 10 oz/ft<sup>2</sup> | 2.900 gr/m<sup>2</sup>  
 Colours | Colores | Couleurs: 56, 57 & 68  
 Max. wide | Anchura máx. | Largueur: 18' | 5,5 m



### M-01

Designer | Diseñador | Designer: Ignasi Soler  
 Polypropylene | Polipropileno | Polypropilène  
 Size | Tamaño | Mesures: 6'x9'-8'x10'-9'x12' | 200x300-250x300-275x365  
 Height | Altura | Hauteur: 0,31 in | 7,88 mm  
 Weight | Peso | Poids: 10 oz/ft<sup>2</sup> | 2.900 gr/m<sup>2</sup>  
 Colours | Colores | Couleurs:  
 Max. wide | Anchura máx. | Largueur: 27' | 8 m



### Moon

*Customizable*

Designer | Diseñador | Designer: My Now  
 Polypropylene | Polipropileno | Polypropilène  
 Size | Tamaño | Mesures: 6'x9'-8'x10'-9'x12' | 200x300-250x300-275x365  
 Height | Altura | Hauteur: 0,5 in | 13 mm  
 Weight | Peso | Poids: 10 oz/ft<sup>2</sup> | 2.900 gr/m<sup>2</sup>  
 Colours | Colores | Couleurs: 9 & 31  
 Max. wide | Anchura máx. | Largueur: 27' | 8 m



# CERTIFICATES

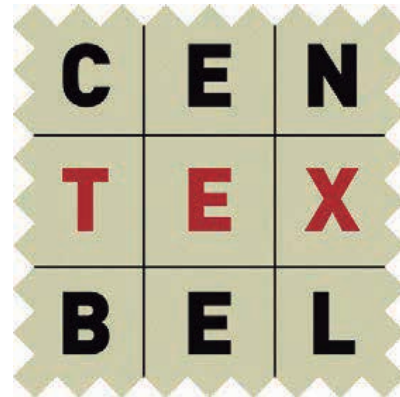
TECNOLOGICAL INSTITUTE CENTEXBEL - BELGIUM  
 VTEC LABORATORIES INC. - USA  
 ISO 8302 RADIANT HEATING WIRE SYSTEM  
 SCOTCHGARD™ TREATMENT Dirt repellent

WOOL & WOOL+VISCOSE & BAMBOO  
 STANDARD FOR THE SURFACE FLAMMABILITY  
 OF CARPETS AND RUGS



CFR part 1630: DOC FFI-70  
 CFR part 1631: DOC FF2-70  
 ASTM D2859

ISO 8302 RADIANT HEATING WIRE SYSTEM



GLP101063

GREEN LABEL PLUS INDOOR Air quality testing program

SCOTCHGARD™ TREATMENT Dirt repellent



ACTIVE MEMBER OF RUGMARK



We members of the international program RUGMARK against child exploitation, ensuring non involvement of child labour in any of the processes.



• It will pass through flammability test I Testado y certificado en el test de inflamabilidad I Testé et certifié dans le test d'inflammabilité 16CFR-1630 (FFI-70).



• It will pass through UVR transmission test I Testado y certificado en el test de transmisión UVR I Testé et certifié dans le test de transmission UVR AATCC183-210.



• It will pass through mildew resistance properties test I Testado y certificado en el test de propiedades de resistencia al moho I Testé et certifié dans le test des propriétés de résistance aux moisissures AATCC 174-20017 AATCC 30.



• ADA compliant I Cumple con la normativa ADA I Conforme à l'ADA.



• It will pass through colour fastness test, colour staining - in the level of 4/4.5 I Testado y certificado en el test de solidez de color - en el nivel 4/4.5 I Testé et certifié dans le test de solidité des couleurs - au niveau 4/4.5  
 • Colour fastness to dry and wet crocking - 4 I Solidez del color al secado en húmedo y seco - 4 I Solidité des couleurs au séchage humide et sec - 4.  
 • Colour fastness to light AATCC 16.3 after 300 hours - 4 I Solidez del color a la luz AATCC 16.3 despues de 300 horas I Solidité des couleurs à la lumière AATCC 16.3 après 300 heures.



# CLEANING

We protect our carpets by treating them with Scotchgard™, which helps repel and clean stains.

We produce our carpets using the best fibres but they require certain care to guarantee a longer life:

- Vacuum the carpet regularly at medium power and always in the direction of the pile.
- Never use the brush attachment as it will damage the wool strands.
- Vacuum clean without rubbing so that any surplus fibres or fluff disappear.
- Check that the vacuum cleaner bag is clean.
- We recommend rotating the carpet to ensure that normal wear occurs uniformly.
- Do not use chemical products or dry clean the carpet as this will damage its colours.
- Every so often take the carpet to a specialized carpet-cleaning establishment.

Cleaning care:

- When a stain occurs take action as quickly as possible. Wipe the stained area with a damp, white cloth to get rid of most of the stain, especially if the carpet has an anti-stain treatment.
- Never rub a liquid stain, try to soak it up using a clean cloth, absorbent cardboard or sponge.
- Always use cold or warm water, never hot water as this fixes the stain
- If the stain is a solid or gooey product it should be removed first using a spatula or damp spoon before applying a stain remover.
- This operation should be performed from the outside to the inside.
- Try to get rid of all remains of the stain before applying a stain remover.
- Before using a product read the instructions carefully and check that it will not discolour the carpet.

Protegemos nuestras alfombras con el tratamiento Scotchgard™, que ayuda a repeler y limpiar las manchas.

Fabricamos nuestras alfombras utilizando las mejores fibras, pero es necesario aplicar ciertos cuidados para garantizar una vida más larga:

- Aspirar la alfombra regularmente a media potencia y siempre en el sentido del pelo.
- No utilizar nunca el aspirador en cepillo, ya que perjudicará los hilos de la lana.
- Aspirar sin frotar para que la pelusilla y el exceso de fibras desaparezcan.
- Vigilar que la bolsa esté limpia.
- Conviene rotar la alfombra para que el lógico desgaste sea uniforme.
- No utilizar productos químicos ni limpiar en seco, ya que perjudicaremos los colores de la alfombra.
- Llevarla cada cierto tiempo a una tienda especializada en la limpieza de alfombras.

Cuidados en limpieza:

- Hay que intervenir lo antes posible, pasando un paño blanco humedecido ligeramente en agua para eliminar la mayor parte de la mancha, especialmente si la alfombra tiene un tratamiento anti-manchas.
- Nunca hay que frotar una mancha líquida. Hay que tratar de absorberla con un paño limpio, un cartón absorbente o una esponja.
- Debemos utilizar siempre agua fría o templada, nunca agua caliente, porque fija la suciedad.
- Si la mancha es pastosa o sólida, hay que quitarla previamente con la ayuda de una espátula o una cucharilla humedecida antes de aplicar un quitamanchas.
- Esta operación debe llevarse desde el exterior hacia el interior.
- Procurar quitar todos los restos de mancha antes de aplicar cualquier quitamanchas.
- Antes de usar cualquier producto, leer detenidamente las indicaciones y comprobar que no va a ocasionar decoloración.







Thanks you all our families, friends,  
clients, colleagues, suppliers collaborators &  
professionals that made this catalogue  
possible.

Thank you | Gracias | Merci

**New York**

NOW CARPETS USA INC  
174 FIFTH AVENUE, SUITE 503  
NEW YORK, NY 10010 (USA)  
TEL: +1 646 583 2949  
usa@nowcarpets.com

**Miami**

NOW CARPETS USA INC  
2727 PONCE DE LEÓN BVLD  
CORAL GABLES, FL 33134(USA)  
TEL: +1 646 583 2949  
usa@nowcarpets.com

**EUROPA**

NOW CARPETS S.C.  
Pº INDEPENDENCIA 8 DUP. 2ª  
50004 ZARAGOZA (SPAIN)  
TEL: +34 976 46 36 45  
now@nowcarpets.com

**NOW**  
C A R P E T S